



**Notice of meeting of
Community Safety Overview & Scrutiny Committee**

To: Councillors Bowgett (Chair), Gillies (Vice-Chair), King, Orrell, Vassie, B Watson, Sue Galloway, Firth (Substitute) and Waudby (Substitute)

Date: Tuesday, 19 January 2010

Time: 5.00 pm

Venue: The Guildhall, York

AGENDA

1. Declarations of Interest

At this point Members are asked to declare any personal or prejudicial interests they may have in the business on the agenda.

2. Minutes (Pages 3 - 6)

To approve and sign the minutes of the meeting of the Committee held on 1 December 2009.

3. Public Participation

At this point in the meeting, members of the public who have registered their wish to speak regarding an item on the agenda or an issue within the committee's remit can do so. The deadline for registering is **Monday 18 January 2010 at 5.00 pm.**

4. Presentation by North Yorkshire Fire & Rescue Service

5. Report of Possible Topics for Scrutiny Review (Pages 7 - 108)

This report presents two topic registration forms which have recently been submitted, together with a list of other suggested topics. Members are asked to consider and agree which, if any, of these they would like to proceed with to scrutiny review.

6. Workplan (Pages 109 - 112)
Members are asked to review the committee's workplan for 2010.

7. Urgent Business
Any Other Business which the Chair considers urgent under the Local Government Act 1972.

Democracy Officer:

Name: Jayne Carr

Contact Details:

Telephone – 01904 552030

Email – jayne.carr@york.gov.uk

For more information about any of the following please contact the Democracy Officer responsible for servicing this meeting:

- Registering to speak
- Business of the meeting
- Any special arrangements
- Copies of reports

Contact details are set out above

About City of York Council Meetings

Would you like to speak at this meeting?

If you would, you will need to:

- register by contacting the Democracy Officer (whose name and contact details can be found on the agenda for the meeting) **no later than 5.00 pm** on the last working day before the meeting;
- ensure that what you want to say speak relates to an item of business on the agenda or an issue which the committee has power to consider (speak to the Democracy Officer for advice on this);
- find out about the rules for public speaking from the Democracy Officer.

A leaflet on public participation is available on the Council's website or from Democratic Services by telephoning York (01904) 551088

Further information about what's being discussed at this meeting

All the reports which Members will be considering are available for viewing online on the Council's website. Alternatively, copies of individual reports or the full agenda are available from Democratic Services. Contact the Democracy Officer whose name and contact details are given on the agenda for the meeting. **Please note a small charge may be made for full copies of the agenda requested to cover administration costs.**

Access Arrangements

We will make every effort to make the meeting accessible to you. The meeting will usually be held in a wheelchair accessible venue with an induction hearing loop. We can provide the agenda or reports in large print, electronically (computer disk or by email), in Braille or on audio tape. Some formats will take longer than others so please give as much notice as possible (at least 48 hours for Braille or audio tape).

If you have any further access requirements such as parking close-by or a sign language interpreter then please let us know. Contact the Democracy Officer whose name and contact details are given on the order of business for the meeting.

Every effort will also be made to make information available in another language, either by providing translated information or an interpreter providing sufficient advance notice is given. Telephone York (01904) 551550 for this service.

যদি যথেষ্ট আগে থেকে জানানো হয় তাহলে অন্য কোন অর্ধাতে তথ্য জানানোর জন্য সব ধরনের চেষ্টা করা হবে, এর জন্য দরকার হলে তথ্য অনুবাদ করে দেয়া হবে অথবা একজন দোঅবী সর্ববরাহ করা হবে। টেলিফোন নম্বর (01904) 551 550।

Yeteri kadar önceden haber verilmesi koşuluyla, bilgilerin terümesini hazırlatmak ya da bir tercüman bulmak için mümkün olan herşey yapılacaktır. Tel: (01904) 551 550

我們竭力使提供的資訊備有不同語言版本，在有充足時間提前通知的情況下會安排筆譯或口譯服務。電話 (01904) 551 550。

اگر مناسب وقت سے اطلاع دی جاتی ہے تو ہم معلومات کا ترجمہ مہیا کرنے کی پوری کوشش کریں گے۔ ٹیلی فون (01904) 551 550

Informacja może być dostępna w tłumaczeniu, jeśli dostaniemy zapotrzebowanie z wystarczającym wyprzedzeniem. Tel: (01904) 551 550

Holding the Executive to Account

The majority of councillors are not appointed to the Executive (40 out of 47). Any 3 non-Executive councillors can 'call-in' an item of business from a published Executive (or Executive Member Decision Session) agenda. The Executive will still discuss the 'called in' business on the published date and will set out its views for consideration by a specially convened Scrutiny Management Committee (SMC). That SMC meeting will then make its recommendations to the next scheduled Executive meeting in the following week, where a final decision on the 'called-in' business will be made.

Scrutiny Committees

The purpose of all scrutiny and ad-hoc scrutiny committees appointed by the Council is to:

- Monitor the performance and effectiveness of services;
- Review existing policies and assist in the development of new ones, as necessary; and
- Monitor best value continuous service improvement plans

Who Gets Agenda and Reports for our Meetings?

- Councillors get copies of all agenda and reports for the committees to which they are appointed by the Council;
- Relevant Council Officers get copies of relevant agenda and reports for the committees which they report to;
- Public libraries get copies of **all** public agenda/reports.

City of York Council

Committee Minutes

MEETING	COMMUNITY SAFETY OVERVIEW & SCRUTINY COMMITTEE
DATE	1 DECEMBER 2009
PRESENT	COUNCILLORS BOWGETT (CHAIR), GILLIES (VICE-CHAIR), KING, ORRELL, B WATSON AND SUE GALLOWAY
APOLOGIES	COUNCILLOR VASSIE

16. DECLARATIONS OF INTEREST

Members were asked to declare any personal or prejudicial interests they may have in the business on the agenda. None were declared.

17. MINUTES

RESOLVED: That the minutes of the meeting of 22 September 2009 be confirmed and signed by the Chair as a correct record.

18. PUBLIC PARTICIPATION

It was reported that there had been no registrations to speak at the meeting under the Council's Public Participation Scheme.

19. UPDATE ON THE MANAGEMENT CHANGES WITHIN NORTH YORKSHIRE POLICE

Members received a report that presented information on the management changes which had now been implemented within North Yorkshire Police, and an analysis by the Safer York Partnership of the possible advantages and disadvantages to York. The report had been prepared in response to concerns expressed by the Committee at their last meeting that the proposed changes to organisation and staffing structures for North Yorkshire Police may be detrimental to the city and have an adverse effect on crime figures.

The Director of the Safer York Partnership outlined the key changes and explained that the work undertaken by North Yorkshire Police formed part of the "Towards 2012: The Next Steps" programme. It was currently too early to ascertain how the changes would impact on the Safer York Partnership, but meetings were held with the Safer Neighbourhood Commander for York on a regular basis and the situation was being closely monitored.

It was noted that the Committee received statistics on recorded crime levels within the Finance and Performance Monitoring reports and it was agreed that the Committee would also find it useful to receive the quarterly reports that were presented to the CDRP Board.

RESOLVED: (i) That the contents of the report be noted.

(ii) That a review of this topic not be undertaken at this time.

REASONS: (i) To inform the work of the committee.

(ii) Sufficient time has not passed for the effects of the changes to become clear.

20. EXECUTIVE MEMBER FOR NEIGHBOURHOOD SERVICES

The Executive Member for Neighbourhood Services had been invited to the meeting to report on forthcoming priorities. The Committee's attention was drawn to the report that had been presented to Council on 15 October 2009, which had provided details on the work of the directorate.

The Committee was informed of recent successes including:

- Silver Gilt Award in Yorkshire in Bloom
- Registrar's Service awarded a rating of "good" and was just three marks short of "excellent" in the Delivery Inspection that took place in March 2009
- Customer Service Excellence Standard was awarded to Environmental Health, Trading Standards, Licensing and Bereavement Services
- 176 staff in Civil Engineering, Highways, Neighbourhood Pride and Building Maintenance departments gained either NVQs or Institute of Leadership and Management Qualifications

The Executive Member also highlighted ongoing challenges:

- Recycling rates continued to rise whilst the total tonnage of waste collected reduced
- The latest survey on street cleaning had shown a distinct improvement in respect of litter and detritus
- There would be implications arising from the More4York programme that would need to be addressed

Members questioned the Executive Member about issues related to her portfolio.

Concerns were expressed regarding the safety and security of people using the disabled toilets. The Executive Member gave details of the arrangements that would be in place when the new Silver Street toilets opened. An attendant would respond if the alarm and light came on during the day. If the alarm was raised at other times, it would trigger a telephone call to the night-coordinator at Hazel Court. The situation with regard to

the security of the locks would be monitored, but as the Radar keys were a national scheme this may have wider ranging implications.

At the request of Members, statistics were provided regarding fly tipping, including the number of warning letters that had been issued. It was noted that the council's performance in this respect compared well with that of other local authorities.

Concerns were expressed as to whether regulations in respect of city centre parking, cycling on the footpaths and the use of blue badges were being enforced. It was noted that the authority did not yet have powers to address moving traffic offences as further enactments of the Traffic Act were not yet in place. Officers did make checks to ensure that blue badges were used appropriately and there had been instances when the badges had been removed.

In response to questions from the Committee, the Executive Member gave details of how salt bins were maintained and funded.

Members commented on the multiple planning applications that had been received in respect of Harewood Whin and suggested that rather than treating such applications on an individual basis, consideration should be given to putting in place an overall planning strategy. The Executive Member stated that this was an issue that the managers were aware of and they believed that the site should be recognised in the Local Development Framework. The issue would be raised with the City Development Team.

21. 2009/10 SECOND MONITORING REPORT - FINANCE AND PERFORMANCE

Members received a report that presented the following data:

- The latest projections for revenue expenditure for the Neighbourhood Services portfolio.
- Progress against the directorate plan priorities and key performance indicators.

Members noted that the Neighbourhood Services portfolio was forecasting an overspend of £292k after identification of in year savings of £200k. This was a variation of 0.9% of the net expenditure budget. Officers gave details of the significant variances, as outlined in paragraph 7 of the report.

Members were updated on key issues for the directorate, as detailed in paragraph 12 of the report, and noted progress against LAA indicators.

RESOLVED: That the financial and performance position of the portfolio be noted.

REASON: In accordance with budgetary and performance monitoring procedures.

22. FEASIBILITY REPORT ON POSSIBLE REVIEW OF THE COUNCIL'S ALLEYGATING POLICY

Members received a report that presented the Council's current policy on alleygating and asked them to consider whether they wished to carry out a scrutiny review of that policy. It was noted that the policy was in the process of being reviewed by officers. The review would consider issues including the consultation process, roles and responsibilities and timings.

Officers were asked about the impact on crime when gates were installed and whether there was evidence that crime was displaced to neighbouring areas. Officers agreed to email data to Members and explained that although there was evidence that crime reduced when gates were installed it also appeared that crime reduced in neighbouring areas.

Members expressed concern regarding the maintenance of existing gating and detailed particular problems regarding the fastening of double gates. Officers stated that they were aware of the situation and that a different design had been used for gates that had been installed more recently. Staff sought to inspect the gates approximately every six weeks but this was not always possible.

- RESOLVED: (i) That, having considered the Council's current policy on alleygating and the information provided in the report, a review of the policy not be carried out at this stage.
- (ii) That, six months after implementation of the revised policy, the committee would reconsider whether a scrutiny review of its impact was required.

REASON: To assist officers with developing a robust policy on alleygating.

23. WORKPLAN 2009-10

Consideration was given to the work plan for the committee for 2009-10. Members were reminded that they could submit possible topics for scrutiny by the committee by raising them at the meeting, contacting the scrutiny officer or registering on-line. The scrutiny officer agreed to email details of the remit of the committee to assist Members in proposing possible topics for a scrutiny review.

Cllr Bowgett, Chair

[The meeting started at 5.00 pm and finished at 6.30 pm].



Community Safety Overview & Scrutiny Committee

19 January 2010

Report of the Head of Civic, Democratic & Legal Services

Report of Possible Topics For Scrutiny Review

Summary

1. This report presents two topic registration forms which have recently been submitted, together with a list of other suggested topics. Members are asked to consider and agree which if any of these they would like to proceed with to scrutiny review.

Background

2. At the last meeting of this Committee in December 2009, it was agreed that Members would submit suggestions for possible topics for scrutiny review in order to facilitate a discussion on the future workplan for this Committee. Subsequently, a copy of this Committee's remit and terms of reference was circulated to assist Members in their identification of suitable topics.

Consultation

3. The Chair of the Committee and the Director of Neighbourhood Services have both been consulted on the topics suggested within this report.

Options

4. Having considered the information within this report and its associated annexes, Members may choose to agree which of the proposed topics:
 - to carry out a scrutiny review of, at this time
 - to seek further information on, in order to decide whether a review is necessary/suitable
 - to add to the workplan as a potential scrutiny review in the future
 - are not suitable for review

Analysis

5. Two topic registration forms have been submitted to Scrutiny Services, on the following topics:

6. The Effectiveness of CCTV in relation to the costs involved – see Annex A
In recent times, use of closed circuit TV (CCTV) has become a key concern of neighbourhoods and communities, and has prompted many local authorities to focus on its associated benefits and problems. Since the introduction of the new local government arrangements, independent scrutiny reviews and investigations have been a popular way to address such concerns. Suggestions for what a review of this topic could cover, are:
 - i. the history of CCTV in York
 - ii. the management and funding arrangements for York's CCTV Service e.g. running/staffing costs, do partners and/or external organisations contribute to the running costs etc
 - iii. present coverage in regard to area covered, staffing hours, number of cameras / operators etc
 - iv. staff training
 - v. the public's view on whether CCTV
 - reduces crime and anti-social behaviour
 - reduces their fear of crime and makes them feel safer
 - is an invasion of their privacy
 - vi. the retail sector's view on CCTV i.e. is its presence of value to them
 - vii. How effective has it been in York e.g.:
 - how many convictions have been achieved as a result of CCTV evidence
 - Can its effect as a deterrent be quantified
7. Information on the use of CCTV in York has been provided by the Safer York Partnership – see Annex B (to follow).
8. 'CYC Winter Gritting Policy' – see Annex C
This subject has proved to be very important to York residents in recent weeks since the onset of the severe weather conditions the city is currently experiencing. Many ward councillors have received complaints particularly about footpaths throughout York, but also about some roads and cycle paths which the public perceive have not been gritted despite the long period of time since the original snowfalls. Concern has also been expressed about the positioning of salt bins in the city.
9. The Assistant Director of Construction & Leisure has already been instructed to review the Council's current policy on gritting and would welcome this Committee's participation in that process. A copy of CYC's current gritting policy is attached at Annex D for your information .
10. In addition, a number of other possible topics have been suggested - see list at Annex E. At this stage, no work has been done to investigate the suitability of these proposed topics due to the time constraints between the topics being suggested and this meeting.
11. Finally, the Director of Neighbourhood Services has provided a summary of issues which fall within the remit of this Committee, that the Directorate will need to

address in the forthcoming year – see Annex F. Some of the suggested topics relate to these forthcoming issues.

Corporate Strategy

12. All of the proposed topics for scrutiny review outlined in the annexes attached to this report, relate to the Council's corporate priority of making York a 'Safer City'.

Implications

13. There are no known Financial, HR, Equalities, Legal, Crime & Disorder, Property or Other implications associated with the recommendation in this report. However there may be some implications associated with the individual topics suggested in this report, which will need to be addressed in future scrutiny reports, should the Committee decide to proceed with a scrutiny review of any of them.

Risk Management

14. There are no known risks associated with the recommendation made within this report.

Recommendations

15. Members are asked to consider all the topics referenced in this report and agree:
- i. which if any of them they wish to carry out a scrutiny review of, at this time
 - ii. what they want to do with the remaining suggested topics

Reason: To populate the workplan and progress the work of this Committee in line with Scrutiny Procedures and Protocols

Contact Details

Author:

Melanie Carr
Scrutiny Officer
Scrutiny Services
Tel No.01904 552063

Chief Officer Responsible for the report:

Alison Lowton
Head of Civic, Democratic & Legal Services

Report Approved



Date

8 January 2010

Specialist Implications Officer(s)

Wards Affected:

All



For further information please contact the author of the report

Background Papers: N/A

Annexes

Annex A – Topic Registration Form for ‘The Effectiveness of CCTV in relation to the costs involved’

Annex B – Information on Use of CCTV in York

Annex C – Topic Registration Form for ‘CYC Winter Gritting Policy’

Annex D – CYCs Current Gritting Policy

Annex E – List of Suggested Topics

Annex F – Summary of Forthcoming Issues Within the Remit of this Committee



SCRUTINY TOPIC REGISTRATION FORM

PROPOSED TOPIC: THE EFFECTIVENESS OF CCTV, IN RELATION TO THE COSTS INVOLVED

COUNCILLOR(S) REGISTERING THE TOPIC: CLLR D. BOWGETT

SECTION 1: ABOUT THE TOPIC
 Please complete this section as thoroughly as you can. The information provided will help Scrutiny Officers and Scrutiny Members to assess the following key elements to the success of any scrutiny review:
How a review should best be undertaken given the subject
Who needs to be involved
What should be looked at
By when it should be achieved; and
Why we are doing it ?

Please describe how the proposed topic fits with 3 of the eligibility criteria attached.
As a general rule, topics will only proceed to review if they meet 3 of the criteria below. However, where it is adequately demonstrated that a topic is of significant public interest and fits with the first criteria but does not meet 3, Scrutiny Management Committee may still decide to allocate the topic for review. Please indicate which 3 criteria the review would meet and the relevant scrutiny roles:

	✓	Policy Development & Review	Service Improvement & Delivery	Accountability of Executive Decisions
Public Interest (ie. in terms of both proposals being in the public interest and resident perceptions)			✓	
Under Performance / Service Dissatisfaction				
In keeping with corporate priorities			✓	
Level of Risk				
Service Efficiency				
National/local/regional significance e.g. A central government priority area, concerns joint working arrangements at a local 'York' or wider regional context			✓	

Set out briefly the purpose of any scrutiny review of your proposed topic. What do you think it should achieve?

If you have not already done so above, please indicate in response to this, how any review would be in the public or Council's interest e.g. reviewing recycling options in the city would reduce the cost to the Council for landfill

To identify the current cost to the council of the provision and maintenance of CCTV across the city

To understand the public's perception of its effectiveness – does it make them feel safer or is it seen as an invasion of privacy?

To identify any improvements that may increase the level of its effectiveness both as a deterrent and tool for gaining convictions, and as a way of reducing the fear of crime

Please explain briefly what you think any scrutiny review of your proposed topic should cover.

This information will be used to help prepare a remit for the review should Scrutiny Management Committee decide the topic meets the criteria e.g. How much recycling is presently being done and ways of increasing it

Understanding the current level of coverage across the city i.e. the number of cameras and operators, the number of man hours

Understanding how it is funded e.g. do Partners and/or external organisations contribute to the running costs?

Gathering residents and business owners views on its effectiveness

Please indicate which other Councils, partners or external services could, in your opinion, participate in the review, saying why.

Involving the right people throughout the process is crucial to any successful review e.g. CYC Commercial Services / other local councils who have reviewed best practice for recycling / other organisations who use recycled goods

Safer York Partnership, NY Police, Businesses, Residents, CCTV Operators

Explain briefly how, in your opinion, such a review might be most efficiently undertaken?

This is not about who might be involved (addressed above) but how the review might be conducted e.g. sending a questionnaire to each household to gather information on current recycling practices and gathering information on how recycling is carried out in Cities similar to York

A visit to the control centre to understand how the system works in York and the current level of coverage across the city – opportunity to meet the operators and gather their views.

Consider its usefulness both as a deterrent and a method of achieving a conviction, using available crime statistics to identify how many convictions have been achieved as a result of CCTV evidence etc

Also, as many Councils have already carried out a scrutiny review of this topic, it may be useful to take a look at their findings to compare and learn from them.

Invite business owners and the Police to attend a meeting of the Committee to gather their views of its effectiveness and identify any issues they have with the current level of provision

Estimate the timescale for completion.

Please circle below the nearest timescale group, in your estimation, based on the information you have given in this form.

- (a) 1-3 months; ✓
- (b) 3-6 months; or
- (c) 6-9 months

PLEASE ENCLOSE ANY SUPPORTING DOCUMENTS OR OTHER INFORMATION YOU FEEL MIGHT BE USEFUL BACKGROUND TO THE SUBMISSION OF THIS TOPIC FOR CONSIDERATION.

Information on scrutiny reviews carried out by other Councils could be provided

SYP could also provide some statistics

This page is intentionally left blank

CCTV Coverage of Crime in the York City Centre

Contents

Introduction

Map of CCTV Coverage in York City Centre

Map of CCTV Coverage and 2009 Crime Hotspots in York City Centre

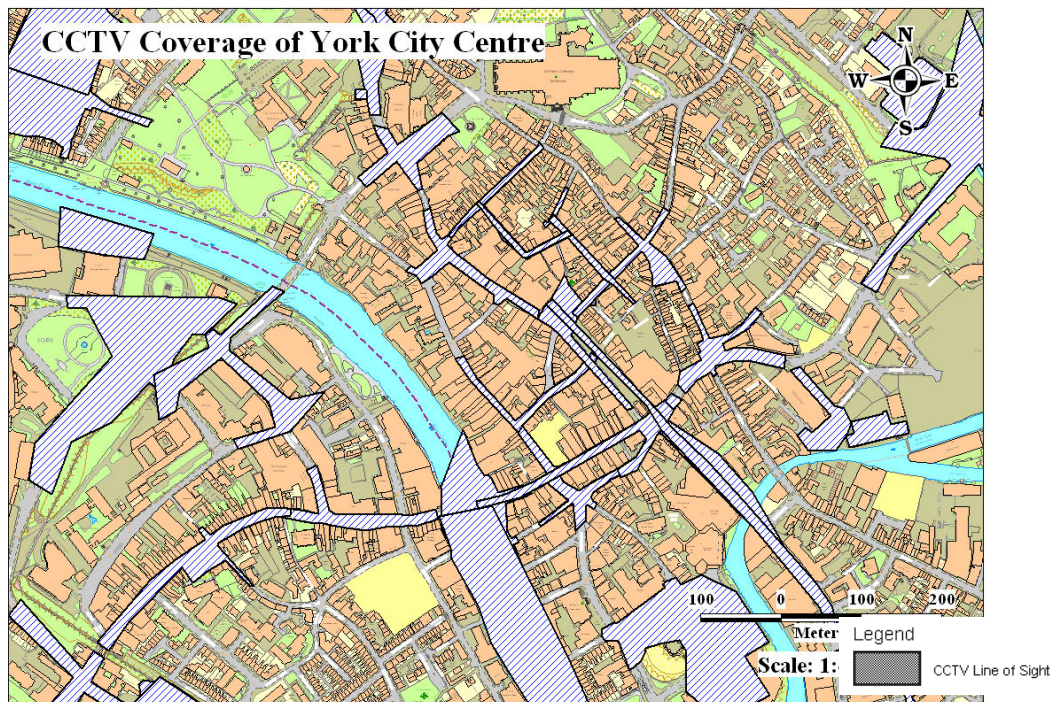
Possible Locations

Summary

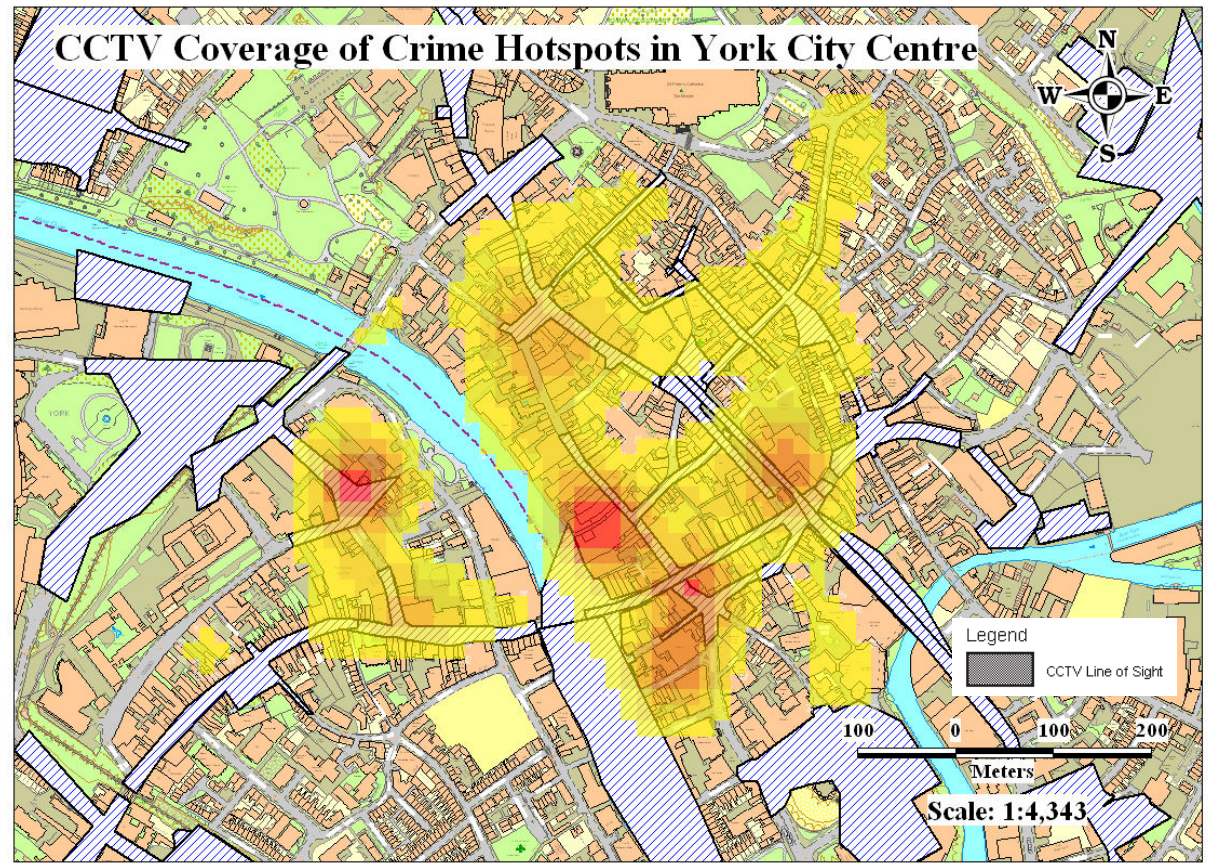
Introduction

This report has been produced by the Safer York Partnership to look at the CCTV Coverage of crime and crime hotspots in the York City Centre. As you can see from the two maps below, much of the city centre is covered by existing CCTV cameras; and the majority of crime hotspots and crime occurs where there is CCTV coverage.

However, there are some locations in the York City Centre where there appears to be some volume of crime but there is limited CCTV coverage; and the three key locations (Coney Street, Goodramgate and Walmgate) are discussed on Pages 3, 4 and 5. It is in these locations where the installation of new CCTV cameras may be effective in reducing crime through deterrence or apprehending offenders through use of the CCTV footage.



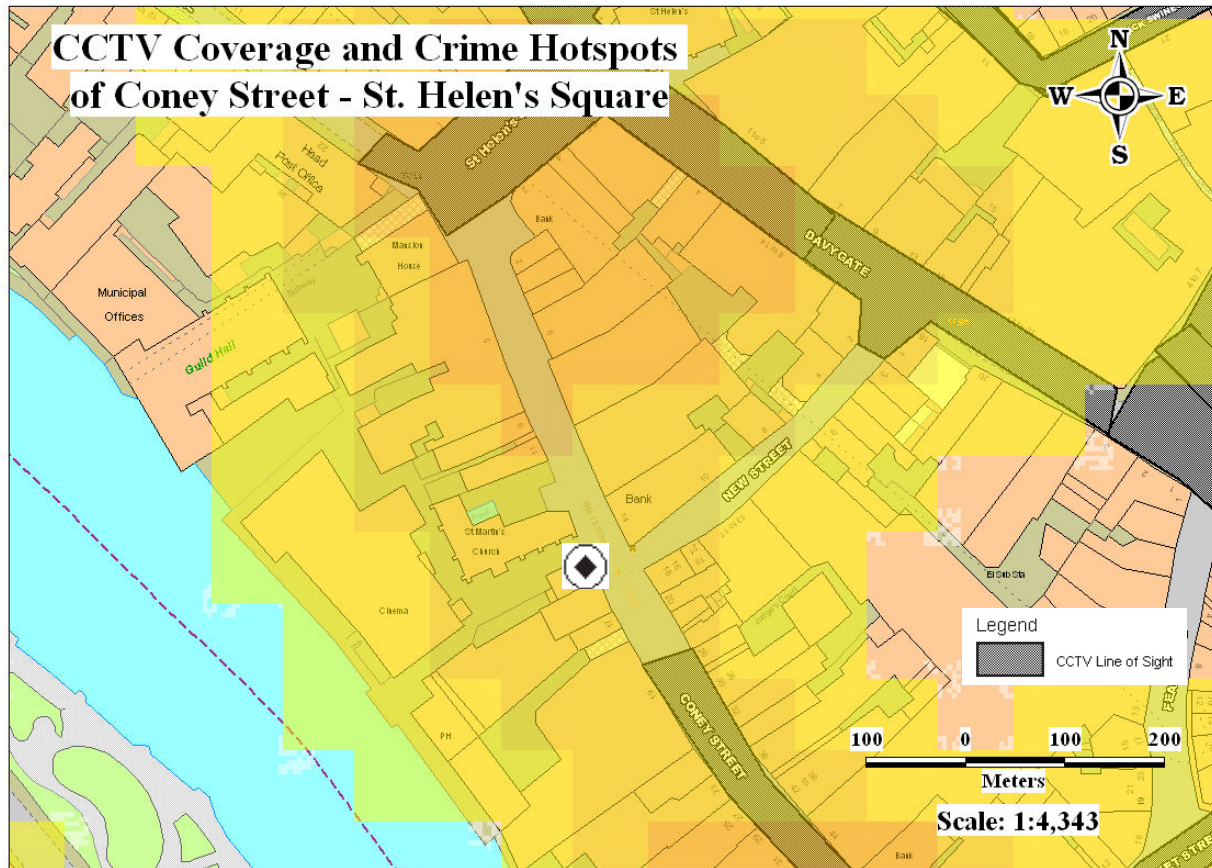
Map of CCTV Coverage and 2009 Crime Hotspots in York City Centre



Possible Locations

Coney Street – St Helen’s Square and New Street

One location where a new CCTV camera could be effective is near where Coney Street meets New Street; this is shown in the map below.

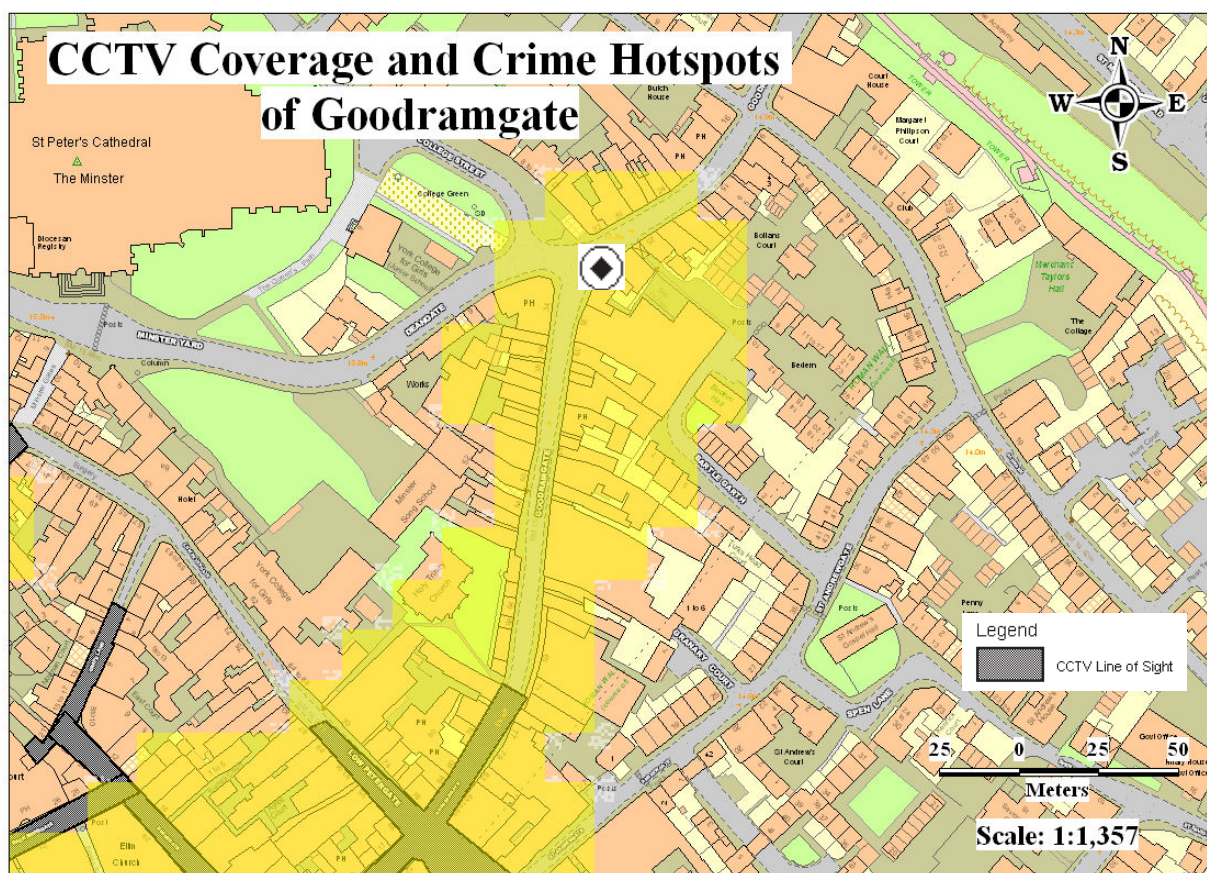


By adding a CCTV camera next to the path leading to the Cinema/Revolution (opposite New Street); the camera would be able to cover much of the path leading to the Cinema/Revolution; New Street, and the gap between the cameras monitoring St Helen’s Square and Coney Street.

Using crime data from the whole of 2009, this camera could have been effective in upto 158 offences which occurred solely in the area covered by the camera.

Goodramgate

Another possible location for a CCTV camera would on the north end of Goodramgate (where it meets Deangate); this is shown in the map below.

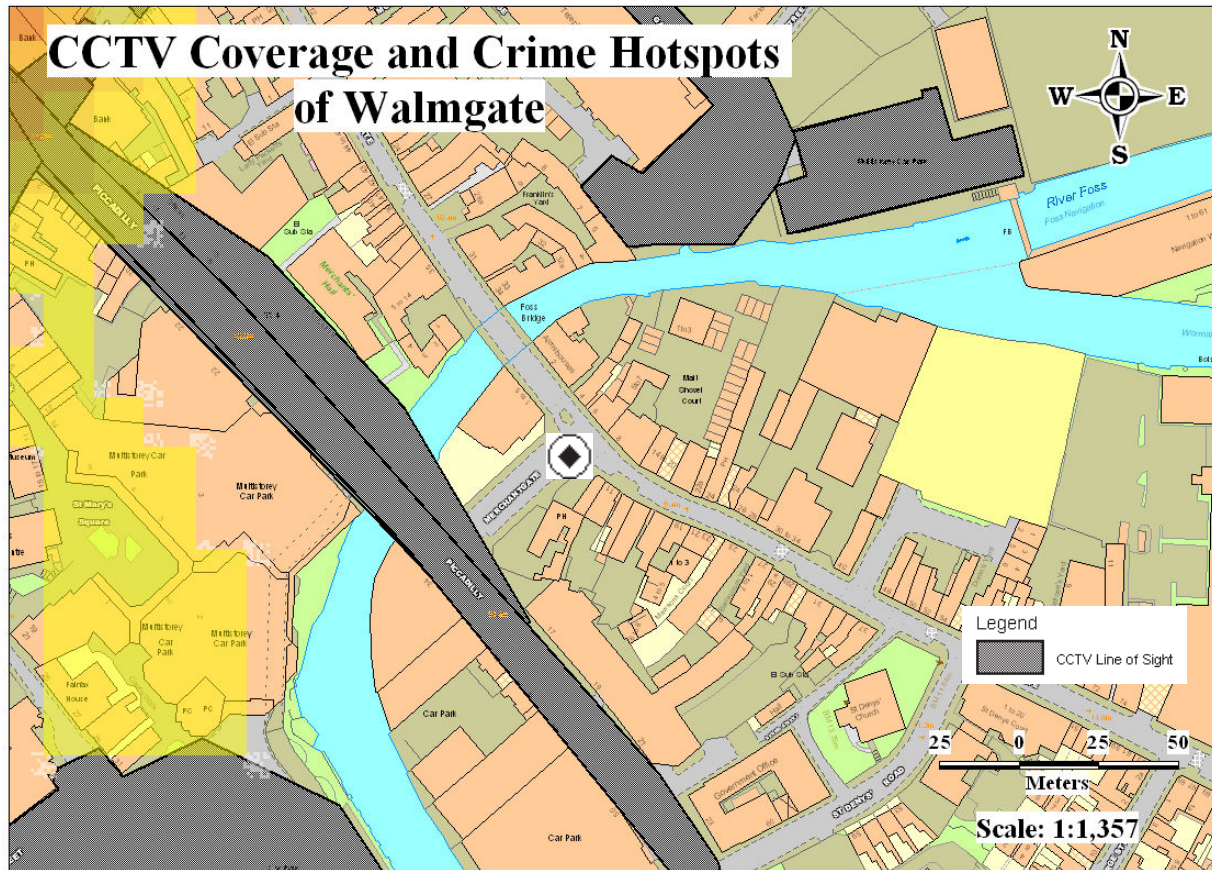


By adding a CCTV camera on the corner where Deangate meets Goodramgate, the camera would be able to monitor not only the up the north-end of Goodramgate too the Bar (where there is some volume of crime) but also down Deangate and College Street.

Using crime data from 2009, this camera could have been effective in upto 120 offences which occurred solely in the area covered by the camera. This camera would also help monitor one of the least CCTV-covered 'exit routes' from the city centre.

Walmgate

Another possible location for a camera would be where Walmgate meets Fossgate and Merchant Gate; this location is shown in the map below.



Although this area doesn't have a significant concentration of crime, by adding a camera where Walmgate meets Fossgate and Merchant Gate, the camera could view a large area up Fossgate (to Pavement); Merchant Gate; and down much of Walmgate.

Not only would this help monitor an 'exit route' (not covered by CCTV) from the city centre but from 2009 crime data this camera could have been effective in upto 63 offences which happened solely in the area covered by the camera.

Summary

As discussed in this report, the majority of crime and crime hotspots are already covered by the existing CCTV cameras; however there are some locations (three key locations: Coney Street, Goodramgate and Walmgate) where new CCTV cameras may be effective against crime.

By adding CCTV cameras on Coney Street and Goodramgate, two crime hotspots not already covered by CCTV would be then covered. Also by adding CCTV cameras on Walmgate and Goodramgate the two least CCTV-covered 'exit routes' from the City Centre would then be covered by CCTV enabling better 'tracking' of offenders across and out of the city centre.



SCRUTINY TOPIC REGISTRATION FORM

PROPOSED TOPIC: SALT BINS/PAVEMENT, ROAD & PATH GRITTING

COUNCILLOR(S) REGISTERING THE TOPIC: Cllr D Bowgett

SECTION 1: ABOUT THE TOPIC

Please complete this section as thoroughly as you can. The information provided will help Scrutiny Officers and Scrutiny Members to assess the following key elements to the success of any scrutiny review:

“In the last week I and other members have received a number of complaints particularly about footpaths throughout York, but also about some roads and cycle paths, which have not been gritted despite the long time that has elapsed since the original snowfalls, and also about the positioning of salt bins in the city. At present many of the latter are funded by ward committees but this decision is controversial, and the overall provision haphazard.

This subject has proved to be very important to York residents as many have fallen on the snow and ice and others have been forced onto the roads, often major ones, with the associated danger this involves. Some tell me or colleagues that they are unable to leave their homes to go shopping or pay their bills.

Please describe how the proposed topic fits with 3 of the eligibility criteria attached.

As a general rule, topics will only proceed to review if they meet 3 of the criteria below. However, where it is adequately demonstrated that a topic is of significant public interest and fits with the first criteria but does not meet 3, Scrutiny Management Committee may still decide to allocate the topic for review. Please indicate which 3 criteria the review would meet and the relevant scrutiny roles:

	✓	Policy Development & Review	Service Improvement & Delivery	Accountability of Executive Decisions
Public Interest (ie. in terms of both proposals being in the public interest and resident perceptions)		✓	✓	✓
Under Performance / Service Dissatisfaction		✓	✓	✓
In keeping with corporate priorities		✓	✓	✓
Level of Risk		✓	✓	✓
Service Efficiency			✓	

National/local/regional significance e.g. A central government priority area, concerns joint working arrangements at a local 'York' or wider regional context

--	--	--	--

Set out briefly the purpose of any scrutiny review of your proposed topic. What do you think it should achieve?

“The review should address the dissatisfaction expressed over how the Council has handled the current severe winter weather episode, and restore public confidence that the Council has an appropriate policy and operational arrangements to handle extended periods of severe icy weather.

It should make recommendations for policy adjustments and operational arrangements for future prolonged spells of severe winter weather are required, taking into account public views on the issue, and those of the adversely affected in particular.

Please explain briefly what you think any scrutiny review of your proposed topic should cover.

This information will be used to help prepare a remit for the review should Scrutiny Management Committee decide the topic meets the criteria e.g. How much recycling is presently being done and ways of increasing it

The review should first look at the how the present gritting policy has been applied in the extended period of winter weather, whether enough staff and technical resources, and of the right type, were available to implement the existing policy initially and then what decisions were made when and by whom in terms of additional actions required to address the continuing nature of this severe winter weather episode. The review should examine how the extended period of icy pavements and roads and the Council's policy has impacted on public safety and on the lives of the elderly, infirm and disabled and any others who are or feel unable to safely go out. It should then look at whether the current policy's apparent neglect of pavements and other foot/cycle paths and roads outside the designated city centre paths for over a week is adequate. I would like to see if any priority is given to main walking (& cycling) routes into the city and to local shops. I would also like to see if areas where there is a known elderly population are given any priority.

“I think a contingency plan needs to be implemented so that when the city is faced with heavy snowfall and/or icy footpaths in the future we can act quickly to clear as many as possible.

I would also hope to reduce the number of complaints.

Please indicate which other Councils, partners or external services could, in your opinion, participate in the review, saying why.

Involving the right people throughout the process is crucial to any successful review e.g. CYC Commercial Services / other local councils who have reviewed best practice for recycling / other organisations who use recycled goods

“Could involve the PCT, York Hospital Trust & emergency services in understanding the level of accidents and injuries resulting from untreated roads and footpaths, and the Older People’s assembly, disabled groups, and the voluntary sector generally in understanding the implications for those trapped in their homes due to the prolonged nature of this severe weather and absence of safe walking surfaces. Local cycling groups and motoring interests could comment on the issues for cyclists and car drivers.

Explain briefly how, in your opinion, such a review might be most efficiently undertaken?

This is not about who might be involved (addressed above) but how the review might be conducted e.g. sending a questionnaire to each household to gather information on current recycling practices and gathering information on how recycling is carried out in Cities similar to York

I think we should have a report from Neighbourhood Services on the current policy and see if any improvements can be made.

The review should be undertaken as quickly as possible to feed into how future episodes are addressed, using a short series of meetings round the areas identified above and certainly be completed no later than late summer.

I have asked residents to write to me with their concerns and Members may also be able to identify problems.

Estimate the timescale for completion.

Please circle below the nearest timescale group, in your estimation, based on the information you have given in this form.

- (a) 1-3 months;
- (b) **3-6 months;** or ✓
- (c) 6-9 months

PLEASE ENCLOSE ANY SUPPORTING DOCUMENTS OR OTHER INFORMATION YOU FEEL MIGHT BE USEFUL BACKGROUND TO THE SUBMISSION OF THIS TOPIC FOR CONSIDERATION.

Copies of letters and emails from members of the public could be provided

This page is intentionally left blank

HIGHWAY MAINTENANCE SERVICES

WINTER MAINTENANCE MANUAL

2009 / 2010



Richard White
Assistant Director
Neighbourhood Services
EcoDepot
Hazel Court
YORK
YO10 3DS

OCTOBER 2009

CONTENTS

1. STATEMENT OF SERVICE
2. ROLES AND COMMUNICATION
3. OPERATIONAL PROCEDURE
4. EQUIPMENT
5. MATERIALS
6. WEATHER FORECASTING
7. SPECIFICATION
8. SEVERE WEATHER CONTROL ROOM
9. CROSS BOUNDARY ARRANGEMENTS

ANNEXES

- 1 WINTER MAINTENANCE DUTY OFFICER ROTA
- 2 OPERATIONS INSTRUCTION FORM
- 3 DEPT. OF TRANSPORT CIRCULAR ROADS No 18/77
- 4 TREATMENT LOG
- 5 NETWORK TREATMENT ROUTE
- 6 PRIORITY SNOW CLEARING NETWORK
- 7 ROUTE MAPS
- 8 STREETS INCLUDED ON GRITTING ROUTE
- 9 DESCRIPTIVE GRITTING ROUTES
- 10 FOOTWAY SNOW CLEARANCE AND PRECAUTIONARY TREATMENT
- 11 SCHEDULE OF SALT BIN LOCATIONS
- 12 SCHEDULE OF CYCLE PATH/WAYS TREATMENT
- 13 DECISION MAKING FLOW CHARTS
- 14 WINTER EMERGENCY CONTROL ROOM – OPERATIONS MANUAL
(NOTE: RESTRICTED CIRCULATION DOCUMENT)
- 15 WEATHER STATION LOCATION PLAN – SEE ATTACHED PDF

1.0 **STATEMENT OF THE SERVICE**

- 1.1 The aim of the winter maintenance service is, as far as is reasonably possible, to allow the safe movement of traffic, pedestrians and cyclists, on York roads, footways and cycleways in times of adverse winter weather. It also seeks to keep delays and accidents to a minimum.
- 1.2 The service uses MeteoGroup for weather forecasting and Vaisala Ice Prediction Service. A Neighbourhood Services Duty Officer determines what precautionary action to take and when to deploy the operational resources for clearing of snow and ice.
- 1.3 The winter maintenance season for York is between 1st November and 31st March, however, monitoring of the weather will begin in October and extend through until April.
- 1.4 Precautionary treatment will be undertaken before ice forms or snow settles on the highway. The precautionary treatment will only be to footways and carriageways on the defined network, which excludes most footways, cycleways and all car parks. Snow clearance is based on a priority network for carriageways and footways. The treatment is co-ordinated with the NYCC, East Riding and the Highways Agency (A-one+) to ensure a reasonable continuity of treatment, this does not necessarily mean that similar treatments will apply.

If there is a formal diversion route in place for traffic management reasons this route will be treated for the duration of the diversion.

1.5 The treatments are:-

- precautionary treatment by lorry mounted spreaders of Safecote on the gritting routes;
- clearance of snow on carriageways by ploughing and when necessary, the application of Safecote and or grit sand;
- clearance of snow and ice on footways by powered footway snow ploughs and shovelling and where necessary, the application of salt and grit sand;
- clearance of snow and ice on footstreet carriageways by trailer gritter and snow ploughs;
- approximately 233 salt bins located throughout the area for resident use on footways.

1.6 In times of exceptional weather conditions, a Severe Weather Control Room will be opened by the Duty Officer to co-ordinate the winter maintenance service. Directorates of City of York Council will staff this control room. (See Annex 14)

1.7 The service will issue information to its customers to keep them advised of the action being taken and the level of service expected. This will be done as publicity through the media, displays and leaflets and Ward Committees.

2.0 **ROLES AND COMMUNICATION**

Roles

- 2.1 Neighbourhood Services are responsible for the management operation and co-ordination of the winter maintenance service. They will monitor the weather and respond to changing conditions. A Duty Officer is responsible for decision making and issuing of instructions to the Operations Supervisor for treatments and deciding when to open the Severe Weather Control Room. Neighbourhood Services are also responsible for monitoring and reviewing the service to the benefit of the City Council customers and, as far as possible, provide an information service and advice about the service.

Communication

- 2.2 Road conditions in winter can change very quickly. It is vital that effective liaison and communication exists between the Weather Centre, Duty Officer, Neighbourhood Services Operations Supervisor, Police, media, Emergency Services, public transport, NYCC, A-one+ and Council Members.
- 2.3 The Duty Officer and Operations Supervisor will communicate by email, fax and telephone, but particularly by telephone out of hours, Bank Holidays and weekends. See Annex 2 for rotas and telephone numbers. Duty Officers and Supervisors will keep mobile telephones operational at all times so that quick contact can be made when necessary.
- 2.4 The Duty Officer will issue an instruction using Form A (see Annex 3) every day (except Bank Holidays and weekends) to the Supervisor as soon as possible after the midday forecast is issued. Subsequent instructions may be issued by telephone and confirmed as soon as possible using Form A.
- 2.5 The midday instruction will be emailed or faxed to NYCC, East Riding and A-one+ Operational Units.
- 2.6 At the judgement of the Duty Officer, Press Releases will be issued for immediate release to Radio York and Minster FM when it is appropriate for the travelling public to be made aware of sudden changes in weather and the action being taken. This may be by telephone.
- 2.7 Any calls received by the Neighbourhood Services Organisation Night Watchman concerning winter maintenance should be referred to the Duty Officer.
- 2.8 In times of prolonged severe weather, regular updates on the service will be issued to the media.
- 2.9 The press and radio will be advised when the Severe Weather Control Room has been opened and regular updates are issued.
- 2.10 In October each year a leaflet, advising of the winter maintenance service is produced and is available throughout the winter season in all the Council's libraries and Departmental receptions.
- 2.11 The information contained within this leaflet is also placed on the council web site.

- 2.12 Customers are made aware of the existence of the leaflet and web site information in October via ward newsletters and posters on notice boards.
- 2.13 In times of severe weather, the Duty Officer will contact the public transport team to advise them of any problems and the actions being taken.

3.0 **OPERATIONAL PROCEDURE**

3.1 **Pre Season Activities**

Highway Maintenance Services

- Order service from MeteoGroup.
- Order service from Vaisala.
- Review previous season.
- Review and amend routes for treatment and snow clearance.
- Review and amend Winter Maintenance Manual.
- Prepare Duty Officer rotas.
- Co-ordinate with adjacent Authorities/Agencies.
- Advise Police of arrangements.
- Inspection of vehicles and materials.
- Agree communications.
- Issue pre season Instructions to Operations.
- Establish communications with media.
- Publish information leaflet advising the public of the service.

3.2 *Operations*

- Establish stockpiles of materials.
- Servicing of plant and equipment.
- Review and amend routes.
- Carry out driver training.
- Calibration of spreaders.
- Order new salt bins as instructed.
- Put out salt bins and fill.
- Prepare Supervisor/Driver rotas.
- Prepare Supervisor/Footway Operatives rotas (Dec to Feb only incl)
- Review Method Statement.

- Carry out trial runs on routes.

Winter Season Daily Activities

3.3 Highway Maintenance Services

- Check weather forecast
 - early morning
 - early afternoon
 - early evening
 - late evening
- Take advice from MeteoGroup.
- Make decision on proposed action.
- Issue Report/Instruction to:
 - Operations
 - NYCC/A-one+
- Open Severe Weather Control Room (when necessary).
- Carry out network inspections.
- Issue publicity releases (when necessary).
- Accept telephone reports/requests and issue instructions.
- Weekend arrangement - Duty Officer to advise Supervisor by telephone
- Co-ordinate winter maintenance activities.

3.4 Operations

- Accept instructions from Duty Officer.
- Mobilise:
 - Drivers
 - Gritters
 - Loaders
 - Fitters
 - Labour
- Carry out treatment.
- Advise Duty Officer of problems.
- Advise Duty Officer when treatment complete.
- Complete treatment logs. (see Annex 6)
- Complete daily reports.

- Telephone reports/requests diverted to Duty Officer.
- Prepare equipment for next action.
- Carry out start and mid season calibration of spreaders.
- Attend Severe Weather Control Room.
- Refill salt bins as instructed by Duty Officer.

3.5 Post Season Activities

- Stand down Supervisor/Duty Officer.
- Carry out post season overhaul of equipment.
- Take in salt bins, clean and store.
- Carry out review of service.

3.6 Carriageways Treatment

- Treatment of route network as drawings in Annex 5.
- Priority snow clearing network as drawing in Annex 6.
- Routes as drawings 1 to 10 in Annex 7.
- Streets included in routes as Annex 8.
- Speed of spreading Optimum gritting at 30mph., where permitted and where applicable
- Precautionary treatment 10g/m².
- Pre-snow treatment 15g/m² (x 2 dependant upon when salting last taken place).
- Post-snow salting 15g/m² to 30g/m².
- Target times 1 hour mobilisation time.
2 hours treatment time.
- Mobilisation time time taken from receipt of instruction to leaving depot.
- Treatment time time from leaving depot to completion of treatment.

3.7 Footways Treatment

- Treatment when the temperature is expected to remain below Zero up to 12 noon the following day.
- Treatment when there are prolonged temperatures of Zero or less and before and after heavy snow.
- Salt bins located through the area for self-help.
- Snow clearance by powered footway ploughs, shovelling as instructed by Duty Officer.
- Application of sand as instructed by Duty Officer.
- Application of Safecote to footways by manual salt spreaders.

Priority

	Drwg No	
Footstreets	GRITCNT1.ECW	Annex 10
Acomb	GRITACO.ECW	Annex 10
Haxby	GRITHAX.ECW	Annex 10
Old School Court	GRITJB1	Annex 10
William Plows Avenue	GRITJB2	Annex 10
Wentworth Road	GRITJB3	Annex 10
Scarcroft Hill	GRITJB3	Annex 10
Routes from Railway Station/Car Parks		
St Helen's Road		

Schedule of Salt Bin Locations Annex 11

3.8 Cycleways Treatment

- No precautionary treatment.
- Spreading of sand as instructed by Duty Officer.
- Schedule of Cycle paths/ways Annex 12

3.9 For standard conditions and actions and chart showing the decision making process See Annex 13.

4.0 **EQUIPMENT**

Operational Vehicles - will be properly garaged and available for inspection and consist of:

- Lorry mounted salt spreaders - 10 no.
2 no. standby.
- Loading Shovel 1 no.
- Towed Spreader 1 no. (and 1 standby/spare)
- Towed Sand Spreader 1 no.
- Footway / cycleway Spreader - 2 no.
- Spreader calibration manufacture setting undertaken pre- and mid season
certification to Duty Officer
mechanism checked and cleared regularly.
- Snowploughs checked for soundness pre- and mid season
mechanism checked and cleaned regularly.
- Salt Bins 233 no. approximately
- Training of Operatives winter maintenance operators qualification
awarded by the City and Guilds Institute.
- Reserve Vehicles in exceptional circumstances, seek
assistance of local contractors.
- Manual Salt Spreaders 8 no.

5.0 **MATERIALS**

Safecote

The precoated salt to be used for winter maintenance operations is in accordance with BS3247 1991 and is a suitable grade so as to be fit for the purpose.

Stockpile

- 2500 tonnes - start of season.
- 1000 tonnes - minimum stockpile.
- 60 tonnes/operation.
- Storage at Hazel Court

Sand

The grit sand to be used for winter maintenance operations is a suitable grade so as to be fit for the purpose.

Stockpile

- 50 tonnes - start of season.
- 25 tonnes - minimum stockpile.
- Storage at Hazel Court

6.0 **WEATHER FORECASTING**

- 6.1 During the winter season the weather forecasting service will be provided by the MeteoGroup Roadcast or similar organisation.
- 6.2 Forecast Procedure
Weather forecasts are web based and provided by MeteoGroup which operates on GMT throughout the year.
- 6.3 Mon - Fri Office Hours
A 24 hour advanced forecast is available for the Duty Officer at around 1 pm and a decision can then be made by the Duty Officer whether or not to treat the network but this is dependant on the confidence level of MeteoGroup Roadcast forecast. If a decision is made to carry out treatment then the Duty Officer will make the necessary arrangements with the supervisor. However if the forecast is marginal, a further update is obtained at 1800 hours. Again depending on the confidence level of the MeteoGroup forecast a decision is taken at this time. If the forecast is still marginal the Duty Officer will monitor the weather using a home based laptop computer and action treatment if required.
- 6.4 Mon - Fri outside office hours, weekends and public holidays.
The procedure is as outlined in 6.3 except that the Duty Officer uses the dedicated home based laptop computer. The Duty Officer will inform the operations supervisor by telephone as soon as the decision is made. The Duty Officer will also update Senior Officers and the Directorate elected member.
- 6.5 All forecasts and decisions are logged on a hard paper file for record purposes and to be used should a third party public liability claim subsequently arise as a result of winter weather.
- 6.6 A Consultancy Service is provided by the MeteoGroup Forecaster and the Duty Officer must make good use of this service especially when the need arises to discuss marginal forecasts, when we can expect significant levels of snowfall or anything whatsoever which will aid the Duty Officer in the decision making process.
- 6.7 Significant changes to the forecast.
The MeteoGroup Roadcast office will notify the Duty Officer immediately if there is a significant change to any earlier forecast. This can be done at the 1800 hours electronic update or by telephone. If this change occurs out of office hours the forecaster will telephone the Duty Officer on their home and/or mobile telephone. A significant change is defined as a 2 degree difference in temperature or a change in temperature or an unforeseen precipitation forecast.

7.0 **SPECIFICATION**

Precautionary Salting

- 7.1 Precautionary salting shall only be carried out on defined roads and footways, normally under the following circumstances:
- a) on wet roads where a weather forecast indicates that freezing conditions may occur.
 - b) on roads where a hoarfrost is predicted (this occurs when the road surface temperature is below zero and at or below dew point).
 - c) in the absence of forecast information when falling temperatures reach +1°C providing that account has been taken of the prevailing humidity, residual salinity and cloud cover - advice should be sought from the MeteoGroup Roadcast in the event of any doubt about these matters.
- 7.2 The decision making process is contained in Annex 13 of this manual.
- 7.3 Meteorological information will be obtained direct from the MeteoGroup Roadcast office and/or via Vaisala.
- 7.4 Precautionary treatment shall be carried out at a minimum rate of 10g/m². When freezing conditions occur, or are expected to occur after rain, precautionary salting rates shall be increased to 15g/m² or 20g/m² in exceptional conditions. In these conditions treatment shall be delayed to reduce loss of salt by run off unless freezing conditions coincide with rainfall.
- 7.5 Where ice and/or snow has formed on the road surface, Safecote shall be spread at a rate of 2 x 15g/m². In these conditions priority shall be given to high category roads (Annex 6).
- 7.6 In the event of sustained low temperatures account shall be taken of the need to increase the rate of spread of salt by approximately 1.0g/m² for every 1°C drop in temperature below -5°.
- Below -11°C the action of salt is ineffective.**
- 7.7 Water from thawing snow can spread across the carriageway and freeze. Additional treatment may be required to deal with this (based on Duty Officers instructions).

Black Ice

- 7.8 Black Ice forms when roads and footways, which have not been treated, are covered with a film of water after rainfall or with melting snow and there is a sharp drop in temperature (a sudden loss of cloud cover) and a thin sheet of ice forms on the surface. Under these conditions the action of Safecote will be less effective and sand will need to be spread on the surface, this will be done at the Duty Officers instruction.

Snow Clearing

7.9 Operational Stages

For the purposes of this plan, there are three operational stages in snow clearing:

- Stage 1 Light Falls of undisturbed accumulation of snow reaching a depth less than 35mm
Stage 2 Moderate Falls of snow reaching a depth of from 35mm to 100mm, or light falls associated with drifting.
Stage 3 Heavy Falls of over 100mm or moderate fall associated with drifting.

- 7.10 When continuous snow is forecast the precautionary spreading rate shall be increased to a continuous 15g/m² or 20g/m² depending on the anticipated severity of the snowfall. The presence of Safecote will melt the initial snowfall and provide a wet surface beneath subsequent snow, thus easing the work of ploughing. The Duty Officer will provide advice on the spread rate.
- 7.11 When a light snowfall occurs and precautionary treatment has not been carried out, dispersal may be effected by spreading Safecote at a rate of up to 2 x 15g/m². Where a succession of treatment runs are undertaken prior to or during snowfall these are to be clockwise then anti-clockwise and repeating as required, directed by WMDO. The action of traffic will accelerate this process. It will not normally be necessary to plough except where local drifting has occurred.
- 7.12 Road ploughing shall be undertaken as soon as the depth of snow exceeds 35mm, with the use of side blades, supplemented by Safecote spread at the rate of 15g/m². Only in exceptional circumstances should repeated applications of Safecote be used as an alternative to ploughing in rural areas. In urban areas where problems may be experienced in ploughing the carriageway due to a build up of snow in channels it may be necessary to make more than one salting run.
- 7.13 When heavy snowfalls occur it may be found useful to plough continuously, to prevent build up and compaction by traffic. Such ploughing can be combined with simultaneous treatment at 15g/m². However once snow depths of 120mm have been reached, when tackling snowdrifts or on gradients, it may be necessary to continue ploughing without Safecote treatment. In these conditions the weight of a Safecote load will aid vehicle traction. In certain circumstances snow may be loaded into vehicles and removed from site to allow the carriageway to be cleared (based on Duty Officer's instructions). Any snow removed within the City Centre will be taken to the River Ouse for disposal.
- 7.14 In the event of such extreme conditions that road blockages due to snow are likely to occur throughout the City, resources shall be concentrated on the defined snow clearance routes (Annex 6).
- 7.15 The decision making process in the event of snow clearing operations is contained in Annex 13 of this manual.
- 7.16 Ploughing should be carried out to avoid the creation of irregular windows in the carriageway and the build up of snow across road junctions, against gates, bridge parapets, fences and walls. This applies particularly to level crossings where close co-operation with the railway service provider must be maintained.
- 7.17 If hard packed snow conditions should occur sharp sand or small aggregate can be spread through tailboard or by towed gritters. Reversion to Safecote should be made as soon as possible since abrasives contribute little to the removal of snow and ice and may block drains and gullies.

- 7.18 Every effort should be made to remove slush from carriageways by the use of side blades particularly when the current weather forecast indicates that freezing conditions are expected.
- 7.19 With regards to snow clearance at railway level crossings, from bridges over railway and rail systems and from roads in the vicinity of railways the Council does comply with the guidance given in the Department of Transport Circular Roads No. 18/77. A copy of this is attached in Annex 3.

Treatment of Footways

- 7.20 Precautionary treatment of some strategic footways will be carried out when the footways are expected to remain below Zero up to 12noon the following day and or where there is a prolonged period of Sub-Zero temperatures, or when snow is forecast to fall and give accumulations. (See Annex 10 for details).
- 7.21 In central urban areas and at other approved locations shown in Annex 10 the treatment of snow or heavy frost may be carried out by the application of Safecote or a grit/Safecote mixture as and when directed by the Duty Officer. Snow exceeding 25mm in depth should be removed prior to this treatment. Only in prolonged adverse weather conditions should treatment be extended to other footways.
- 7.22 If Black Ice forms at locations around the City Centre the Duty Officers will make an early decision whether to apply grit sand to the affected areas.
- 7.23 Highway Maintenance Services have established a priority listing of footways to be treated in accordance with item 3.7 and shown in Annex 10.
- 7.24 Neighbourhood Services (NS) will have men on standby for footway treatment between the period December to February (inclusive). The remainder of time will be similar subject to WMDO's discretion or if occasional treatment needed manned by volunteers of NS.

Safecote

- 7.25 Rock salt pre-coated with Safecote complying with British Standard BS3247.1991 shall be used for the winter maintenance of the defined roads. BS3247.1991 specifies the essential properties of the salt and includes details of test procedures for determining these properties.
- 7.26 Reserves of Safecote will be held within the general stockpiles contained in Neighbourhood Services, Hazel Court depot.
- 7.27 Safecote will be made available from 1 October each year by Neighbourhood Services Operations for use until the conclusion of the winter maintenance period (generally 30 April the following year) or as directed by the Winter Maintenance Duty Officer.

- 7.28 During this period it will be Neighbourhood Services Operations responsibility to ensure that the Safecote is maintained in a suitable condition to ensure its correct application by Neighbourhood Services Operations winter maintenance vehicles to the road surface.
- 7.29 The Safecote moisture content will vary dependent on the method of storage used and Neighbourhood Services Operations shall take action as necessary to maintain the Safecote to the requirements of BS3247.1991, during the period of responsibility.
- 7.30 Safecote, when evenly distributed across the carriageway surface, will offer protection against the formation of ice generally in accordance with the details given below:

Rate of Application	Minimum Temperature
10/15 g/m ²	-3/-4°C
15/20 g/m ²	-4/-6°C
25/30 g/m ²	-10/-12°C

- 7.31 In exceptional circumstances Neighbourhood Services Operations will be required to apply an abrasive aggregate either separately or in addition to rock salt as directed by the Duty Officer.

8.0 **SEVERE WEATHER CONTROL ROOM**

- 8.1 During prolonged severe weather conditions the winter maintenance Duty Officer has discretion to open the Control Room. More information on this and the procedures for opening it can be found in Annex 14.

NOTE: ANNEX 14 IS A RESTRICTED CIRCULATION DOCUMENT

9.0 **CROSS BOUNDARY ARRANGEMENTS**

9.1 A-one+ - No arrangements with A-one+, all routes curtailed on the boundary.

9.2 East Riding of Yorkshire Council - No arrangements with East Riding of Yorkshire Council, all routes curtailed on the boundary.

9.3 North Yorkshire County Council - The City of York Council will treat the A166 from its boundary to the Buttercrambe junction. In return Division 4 (Kirbymoorside) will treat the C92 Corban Lane Wigginton from the City Boundary to the B1363 Wigginton Road and will treat the B1363 Wigginton Road from the City Boundary to the Reliance garage.

Division 2 (Thirsk) will treat the A19 from Skelton boundary to the junction with the road to Overton, just south of Shipton by Beningbrough.

SEVERE WINTER WEATHER CONTROL ROOM CALL LOG

Call taken by Date / / Time :

CUSTOMER MAKING REPORT:

Name Tel No.

Address

Village/Town

Detail of problem/request/report etc.

Initial action taken or reply made

Initial action taken/reply made by:

--

Further action to be taken

Further action to be taken by:

--

Information passed to above by: Verbal/ Fax / Other:

--

Confirmation of Information Received / Further Action carried out

Other comments

Other comments made by:

--

POST OFFICE LOCATIONS

Acomb PO
65 Front Street, Acomb
Tel: 798301

Foss Mount PO
191-193 Huntington Road
Tel: 624619

Beckfield Lane PO
147 Beckfield Lane
Tel: 785910

Heslington PO
13 Main Street, Heslington
Tel: 412171

Bishopthorpe PO
25-27 Main Street, Bishopthorpe
Tel: 706186

Heworth PO
73 East Parade
Tel: 424641

Broadway PO
44 Broadway
York
Tel: 627290

Hopgrove PO
Orchard Nurseries
48 Hopgrove Lane South
Tel: 421153

Brockfield PO
60 Brockfield Park Drive
Tel: 624768

Huntington PO
43 North Moor Road, Huntington
Tel: 769180

Copmanthorpe PO
9 The Shopping Centre, Copmanthorpe
Tel: 706287

Lendal PO
22 Lendal
Tel: 0845 7223344

Crichton Avenue PO
1 Intake Avenue
Tel: 622804

Market Place PO
4 Colliergate
Tel: 651398

Dringhouses PO
14 Tadcaster Road
Tel : 706438

Melrosegate PO
204 Melrosegate
Tel: 411964

Dunnington PO
29 York Street, Dunnington
Tel: 481320

Micklegate PO
95 Micklegate
Tel: 622059

Eastholme Drive PO
Costcutter Store
20 Eastholme Drive
Tel: 628391

Naburn PO
The Reading Rooms
Front Street, Naburn
Tel: 644100

POST OFFICE LOCATIONS

New Earswick PO
20 Hawthorn Terrace, New Earswick
Tel: 768105

Skelton PO
52 Fairfields Drive, Skelton
Tel: 470837

Stockton on the Forest PO
52 The Village, Stockton on the Forest
Tel: 400906

Strensall PO
53-55 The Village, Strensall
Tel: 490301

Tang Hall Lane PO
192-194 Tang Hall Lane
Tel: 412959

Upper Poppleton PO
Station Road, Upper Poppleton
Tel: 794365

Walmgate Bar PO
101 Walmgate
Tel: 623956

Wheldrake PO
58 Main Street, Wheldrake
Tel: 449382

Woodthorpe PO
61 Moorcroft Road
Tel: 707329

SCHOOL LOCATIONS

Special Schools

Applefield School
Bad Bargain Lane
Tel: 415924

Nursery School

Elvington Under Fives
The Green Unit, Dauby Lane
Tel: 607515

Happy Jays Nursery
Audax Close
Tel: 479261

Kaleidoscope/Acorn
Queen Annes Road
Tel: 642547

Ladybirds Kinder Class
St. Andrews Church, Huntington Road
Tel: 750363

Rainbow Playgroup
Carr Jnr School, Ostman Road
Tel: 798996 + 07821351869

St Aelreds R C Primary School
216 Fifth Avenue
Tel: 422800

St Paul's Nursery School
12 St Paul's Square, Holgate Road
Tel: 622291

Straylands Private Day Nursery
Fairfield, Malton Road
Tel: 416306

Primary Schools

Acomb Primary
West Bank, Acomb
Tel: 798453

Archbishop of York's CE Junior
Bishopthorpe
Tel: 706272

Badger Hill Primary
Crossways, Hull Road
Tel: 410213

Bishopthorpe Infant
Sim Balk Lane, Bishopthorpe
Tel: 707506

Burton Green Primary (N)
Burton Green, Clifton
Tel: 655028

Carr Infant
Ostman Road, Acomb
Tel: 798266

Carr Junior
Ostman Road, Acomb
Tel: 798996

Clifton Green Primary
Kingsway North, Clifton
Tel : 627270

Clifton Without Junior
Rawcliffe Lane, Clifton Without
Tel: 624568

Copmanthorpe Primary
Low Green, Copmanthorpe
Tel: 705400

SCHOOL LOCATIONS

Primary Schools (cont...)

Derwent Infant (N)
Osbalwick Lane, Osbalwick
Tel: 410009

Heworth CE Primary
53 Heworth Road, Heworth
Tel: 424742

Derwent Junior
Osbalwick Lane, Osbalwick
Tel: 413231

Hob Moor Primary
Green Lane, Acomb
Tel: 791140

Dringhouses Primary
St Helen's Road, Dringhouses
Tel: 706493

Huntington Primary
North Moor Road, Huntington
Tel: 768636

Dunnington CE Primary (VC)
Pear Tree Lane, Dunnington
Tel: 489615

Knavesmire Primary (N)
Campleshon Road, York
Tel: 653279

Elvington CE Primary (VC)
Dauby Lane, Elvington
Tel: 608393

Lakeside Primary
Oakdale Road, Clifton Without
Tel: 691473

English Martyrs RC Primary (VA)
Hamilton Drive, Acomb
Tel: 791370

Lord Deramore's Primary (VC)
School Lane, Heslington
Tel: 410457

Fishergate Primary (N)
Fishergate, York
Tel: 623511

Naburn CE Primary (VC)
Naburn
Tel: 633287

Haxby Road Primary (N)
154 Haxby Road, York
Tel: 653218

New Earswick Primary (VA)
Hawthorn Terrace, New Earswick
Tel: 768228

Headlands Primary
Oak Tree Lane, Haxby
Tel: 762356

Osbalwick Primary
The Leyes, Osbalwick
Tel: 411036

Hempland Primary
Whitby Avenue, Stockton Lane
Tel: 421065

Our Lady's RC Primary (N) (VA)
Windsor Garth, Acomb
Tel: 791646

SCHOOL LOCATIONS

Primary Schools (cont...)

Park Grove Primary
Park Grove, York
Tel: 659727

St Barnabas' CE Primary (VC)
Jubilee Terrace, Leeman Road
Tel: 653323

Poppleton Ousebank Primary
Main Street, Upper Poppleton
Tel : 794649

St George's RC Primary (N) (VA)
1 Winterscale Street, York
Tel: 636427

Poppleton Road Primary
Poppleton Road, York
Tel: 798789

St Lawrence's CE Primary (VA)
Heslington Road, York
Tel: 625131

Ralph Butterfield Primary
Station Road, Haxby
Tel: 768325

St Mary's CE Primary (VC)
School Lane, Askham Richard
Tel: 707125

Rawcliffe Infant (N)
Eastholme Drive, Clifton
Tel: 624772

St Oswald's CE Primary
Heslington Lane, Fulford
Tel: 633341

Robert Wilkinson Primary (VC)
West End, Strensall
Tel: 490306

St Paul's CE Primary (VC)
St Paul's Terrace, Holgate Road
Tel: 625240

Rufforth Primary
Wetherby Road, Rufforth
Tel: 738347

St Wilfred's RC Primary (VA)
Monkgate, York
Tel: 659726

Scarcroft Primary
Moss Street, York
Tel: 653569

Stockton-on-the-Forest Primary
The Village, Stockton-on-the-Forest
Tel: 400366

Skelton Primary
Brecksfield, Skelton
Tel: 470344

Tang Hall Primary (N)
Sixth Avenue, Heworth
Tel: 424765

St Aelred's RC Primary (N) (VA)
Fifth Avenue, Tang Hall
Tel: 422800

Westfield Junior
Askham Lane, Acomb
Tel: 798451

SCHOOL LOCATIONS

Primary Schools (cont...)

Wheldrake CE Primary (VA)
North Lane, Wheldrake
Tel: 448564

Wigginton Primary
Westfield Lane, Wigginton
Tel: 761647

Woodthorpe Primary
Summerfield Road, Woodthorpe
Tel: 705462

Yearsley Grove Primary
Yearsley Grove, Huntington
Tel: 656681

Secondary Schools

All Saints' RC (VA)
Nunnery Lane, York
Tel: 647877

Archbishop Holgate's CE School (VC)
Hull Road, York
Tel: 411341

Burnholme Community College
Bad Bargain Lane, York
Tel: 415906

Canon Lee School
Rawcliffe Drive, York
Tel: 560000

Fulford School
Fulfordgate, Fulford
Tel: 633300

Huntington School
Huntington Road, York
Tel: 752100

Joseph Rowntree School
Haxby Road, New Earswick
Tel: 768107

York High School
Cornlands Road, Acomb
Tel: 791674

Manor CE School (VA)
Millfield Lane, York
Tel: 782902

Millthorpe School
Nunthorpe Avenue, York
Tel: 686400

SHELTERED HOUSING LOCATIONS

City of York Council

Marjorie Waite Court
Evelyn Crescent, Clifton
Tel: 612595/551870

Honeysuckle House
Herdsman Road, Dringhouses
Tel: 552624

Lovell House
Wains Road, Dringhouses
Tel: 552626

The Glebe
The Manor Beeches, Dunnington
Tel: 552617

Delwood
Main Street, Fulford
Tel: 552620

Glen Lodge
2 Sixth Avenue, Heworth
Tel: 422837

Gale Farm Court
Front Street, Acomb
Tel: 552294

Alex Lyon House
St Aelred's Close, Fifth Avenue
Tel: 552618

Barstow House
St. Benedicts Road
Tel: 654246

City Mills
Skeldergate
Tel: 552619

Helmsley House
The Groves,
March Street, York
Tel: 552623

Moatside Court
Lord Mayor's Walk
Tel: 552628

Lincoln Court
Ascot Way, Windsor Garth
Tel: 552622

Esplanade Court
Marygate
Tel: 552628

Dale Street & Swann Street
Nunnery Lane
Tel: 636929

Bootham Square
Bootham Square, York
Tel: Warden Lorna 07767318131

Joseph Rowntree Housing Trust

Sandacre Court
Beckfield
Tel: 781544

Dower Court
William Plows Avenue
Tel: 416650

Red Lodge
New Earswick
Tel: 762111

Old School Court
Upper Poppleton
Tel: 750700

SHELTERED HOUSING LOCATION

York Housing Association

Margaret Philipson Court
The Groves
Tel: 632075

Bretgate
Navigation Road
Tel: 658171

Lichfield Court
Albemarle Road
Tel: 656044

Anchor Trust

Saddlebrook Court
Herman Walk, Foxwood
Tel: 790696

Elm Tree Gardens
Oak Rise, Acomb
Tel: 789433

Guardian Court
Water Lane, Clifton
Tel: 652494

Barleyfields
Shipton Road, Clifton
Tel: 629879

CARE HOME LOCATIONS

Older People: Local Authority Homes

Fordlands Road
1 Fordlands Road, Fulford
Tel: 630048

Grove House
40-48 Penley's Grove Street
Tel: 628250

Haxby Hall
York Road, Haxby
Tel: 768944

Morrell House
388 Burton Stone Lane
Tel: 658998

Oakhaven
144 Acomb Road
Tel: 791599

Oliver House
20 Bishophill Junior
Tel: 653301

Willow House
Long Close Lane
Tel: 630437

Windsor House
22 Ascot Way
Tel: 798004

Woolnough House
52 Woolnough Avenue, Tang Hall
Tel: 413656

Adults: Local Authority Homes

77 Flaxman Avenue
Tang Hall
Tel: 426428

Older People: Private & Voluntary Homes

Broadway Lodge
151 Fulford Road
Tel: 621884

Connaught Court
The Royal Masonic Benevolent Institution
St Oswald's Road, Fulford
Tel: 626238

Galtres Care Home LLP
Ox Carr Lane, Strensall
Tel: 491300

Grimston Court Residential Home
Hull Road
Tel: 489343

Ivy Lodge Retirement Home
Briergate, Haxby
Tel: 760629

Lamel Beeches
JRHT. 105 Heslington Road
Tel: 416904

Lime Tree House
Chantry Green, Main Street, Upper
Poppleton
Tel: 795280

CARE HOME LOCATIONS

Old People: Private & Voluntary Homes (cont)

The Lodge
Main Street, Heslington
Tel: 430781

The Oaks
JRHT. Hartrigg Oaks, Haxby Road, New Earswick
Tel: 750700

Parkside
98-100 Bishopthorpe Road
Tel:

Red Lodge
JRHT. Hawthorne Terrace, New Earswick
Tel: 762111

Rosevale Residential Home
33 The Village, Wigginton
Tel: 764242

Somerset Nursing Home
1 Church Lane, Wheldrake
Tel: 448313

York Rise Nursing & Residential Home
Heslington Road
Tel: 612670

Adults: Private & Voluntary Homes

Alder House
JRHT. Alder Way, New Earswick
Tel: 750453

1 Arbor Close
mencap, Huntington
Tel: 750313

2 Arbor Close
mencap, Huntington
Tel: 750390

3 Arbor Close
mencap, Huntington
Tel: 750499

Charles Court
JRHT, Northfields, Strensall
Tel: 491589

Christmas Lodge
196 Mount Vale
Tel: 647442

The Lifestyles
55-59 Wentworth Road, Scarcroft Hill
Tel: 645650

14 Derwent Road
United Response, **Fulford**
Tel: 640551

The Dexters
21 Penley's Grove Street
Tel: 644675

Dormary Court
JRHT. Huntington Road
Tel: 764901

The Graver's Care Home
17 Wigginton Road
Tel: 645510

Haisthorpe House
139 Holgate Road
Tel: 654638

CARE HOME LOCATIONS

**Adults: Private & Voluntary Homes
(cont...)**

34 Maple Avenue
mencap, Bishopthorpe
Tel: 708870

35 Staindale Close
United Response, Rawcliffe
Tel: 672372

8 The Village
United Response, Haxby
Tel: 750308

22 Witham Drive
mencap, Huntington
Tel: 750307

Woodlands Respite Care Centre
Thief Lane, Hull Road
Tel: 430600

65 York Road
Milbury Care Services, Haxby
Tel: 761846

**Other (Small) Private & Voluntary
Homes**

85 Moorgate
Acomb
Tel: 339185

Red Oaks
27 Hawthorne Terrace, New Earswick
Tel: 768126

Wishing Well
37 Leven Road, Dringhouses
Tel: 337566

Yearsley Villa Residential Home
177 Huntington Road
Tel: 634759

5 Navigation Road
MENCAP
Tel: 655530

1 Greenfields
MENCAP
Tel: 632881

NURSING HOME LOCATIONS

Birchlands Nursing Home
Moor Lane, Haxby
Tel: 760100

The Retreat
107 Heslington Road
Tel: 412551

Blair Atholl Hospital
122 York Road, Haxby
Tel: 768738

Somerset Nursing Home
1 Church Lane, Wheldrake
Tel: 448313

Connaught Court
St Oswalds Road, Fulford
Tel: 626238

South Park Care House
Gale Lane, Acomb
Tel: 784198

Dunnington Lodge Nursing Home
34 Church Street
Tel: 488676

Stockton Hall
Main Building, The Village, Stockton-on-Forest
Tel: 400500

Fulford Nursing Home
43 Heslington Lane
Tel: 654269

St Leonard's Hospice
185 Tadcaster Road
Tel: 708553

Lamel Beeches Nursing Home
105 Heslington Road
Tel: 416904

The Meadowbeck Care Home
1 Meadowbeck Close
Osbalwick Lane
Tel: 424244

Moorlands Care Home
10 Moor Lane, Strensall
Tel: 491694

Woodlands Respite Care
120 Thief Lane, Hull Road
Tel: 430600

The Mount Nursing Home
188 The Mount Vale
Tel: 647442

York House Ventures Ltd
The Retreat, 107 Heslington Road
Tel: 412666

Mulberry Court Care Home
Clifton Park, Shipton Road
Tel: 671122

York Rise Nursing & Residential Home
Heslington Road
Tel: 612670

The Oaks
Hartrigg Oaks, Haxby Road, New Earswick
Tel: 768266 / 750700

Nuffield Hospital
Haxby Road
Tel: 715000

WINTER GRITTING 2009-2010 DUTY ROTA

TEAM	DATE		SUPERVISOR	WMDO
B	02 NOV		Bill	John
A	09 NOV		Sean	Dave
B	16 NOV		Nick	Michael
A	23 NOV		Bill	John
B	01 DEC		Sean	Dave
A	07 DEC		Nick	Michael
B	14 DEC		Bill	John
A	21 DEC		Sean	Dave
B	28 DEC		Nick	Michael
A	04 JAN		Bill	John
B	11 JAN		Sean	Dave
A	18 JAN		Nick	Michael
B	25 JAN		Bill	John
A	01 FEB		Sean	Dave
B	08 FEB		Nick	Michael
A	15 FEB		Bill	John
B	22 FEB		Sean	Dave
A	01 MAR		Nick	Michael
B	08 MAR		Bill	John
A	15 MAR		Sean	Dave
B	22 MAR		Nick	Michael
A	29 MAR		Bill	John

FORM A

**WINTER MAINTENANCE 2009/2010
CITY OF YORK COUNCIL**

DAILY WINTER MAINTENANCE OPERATIONS INSTRUCTION

DATE OF FORECAST

FORECAST INFORMATION

R.S.Temp:	Road State:
Hazards (Confidence); RST(), Ice (), Frost (), Snow ()	

ACTION REQUIRED

OPERATIONS INSTRUCTIONS

PRECAUTIONARY OPERATIONS DEFINED HIGHWAY NETWORK

EVENING GRIT	TO COMMENCE AT
	SPREAD RATE
MORNING GRIT	TO COMMENCE AT
	SPREAD RATE

OTHER OPERATIONS

CARRIAGEWAY PLOUGHING	
FOOTWAYS	P1
	P2
CYCLWAYS	

COMMENTS

INSTRUCTION ISSUED BY:

ENGINEER

DATE / TIME

CIRCULAR ROADS NO 18/77

MRH/K

Department of Transport
2 Marsham Street London SW1P 3EB

Direct line 01-212
Switchboard 01-212 3434

The Town Clerk	Your reference
The Chief Executive Officer	
The Greater London Council	Our reference
County Councils	HM1/922/1
District Councils	Date
London Borough Councils	28 June 1977
The Common Council of the City of London	

Dear Sir

**WINTER MAINTENANCE –
SNOW CLEARING AT RAILWAY LEVEL CROSSINGS, FROM ROAD BRIDGES OVER
RAILWAY AND ROAD SYSTEMS AND FROM ROADS IN THE VICINITY OF RAILWAYS.**

1. Circular ROADS No. 15/74, prepared in consultation with British Rail, gave guidance in its appendix on the execution of snow ploughing operations at railway crossings, and emphasised the need for local liaison between railway and highway authorities.
2. Experience during the recent winter has pointed the need to extend advice on winter maintenance activities on over-rail bridges and on over-road bridges and on roads in the vicinity of railways. Paragraphs 9 and 10 of the attached appendix contains that advice after appropriate consultation with British Rail and the opportunity has also been taken to make an increase in emphasis throughout the appendix. Circular Road No. 15/74 is accordingly superseded and copies of it should be destroyed.
3. Reference should also be made to Circular Roads 37/75 concerning safety to automatic half barrier level crossings and to current Traffic Sign Regulations.

Yours faithfully

J L HAMMOND

Note: Any correspondence concerning this Circular should be addressed to the Department of Transport, Highways Management 1 Division, 2 Marsham Street, London SW1P 3EB. Telephone enquiries should be made to 01-212-7110 or 7111. (Distribution enquiries 01-212-4944).

SNOW CLEARING AT LEVEL CROSSINGS; FROM ROAD BRIDGES OVER RAILWAY SYSTEMS AND FROM ROADS PROXIMATE TO RAILWAYS.

1. CLEARANCE TO BE EFFECTED BY HIGHWAY AUTHORITY

British Rail rarely need to use snow ploughs, and even when they do so the result may be unsatisfactory for highway purposes. It has, therefore, been agreed that the appropriate highway authority should continue its ploughing operation over crossings situated on roads which are being cleared. There must, however, be proper liaison between the highway and rail authorities and care must be taken that snow does not build up across the tracks or against gates and barriers.

2. GUIDANCE ON THE USE OF VARIOUS VEHICLE TYPES – MECHANICAL SAFETY

2.1 Snow-Ploughs, Snow Blowers and Snow Cutters of the Rotary Type.

Rotary equipment should NEVER be used to clear snow from any type of level crossing since there is a danger of the lower blade and support shoes fouling the rails.

2.2 Department of Transport/Ploughing/Salt Vehicles.

These may be used for snow clearance at level crossings subject to observance of paragraphs 3 and 6 below.

2.3 Local Authority Vehicles

Winter maintenance equipment, owned or operated by local authorities, varies considerably. Close cooperation is therefore essential between an authority and British Rail about the machinery available and how it can be used with safety and to the fullest advantage for clearing snow from, and spreading salt on, level crossings.

3. GUIDANCE RELATED TO VARIOUS TYPES OF LEVEL CROSSING

3.1 Unmanned Crossings with Automatic Half Barriers

These are connected by telephone to the signal box controlling that particular section of line. The driver of a snow-plough must always obtain permission by telephoning the controlling signalman for safety clearance before proceeding on the crossing.

It is essential that snow be cleared from both lanes of a carriageway at half barrier crossings for a distance of at least 45 metres on either side of the crossing. If one lane is cleared and the other left covered with snow, even for a short time, road users may be tempted to weave around one of the half barriers in order to get on to the clear lane. With the opposite half barrier closed vehicles could be trapped or staff on the crossing with a train approaching. After the snow has been cleared the driver must park his plough at a safe distance from the railway track and return on foot to report to the signal man as quickly as possible that he is now clear of the crossing. In so doing he must confirm to the signalman that snow has not been built up across the track in such quantity as to impede trains.

3.2 Unmanned Crossings Controlled by Miniature Red/Green Lights

These too are connected by telephone to the appropriate signal box. Again the driver of the snow plough must always obtain permission by telephoning the controlling signalman for safety clearance before proceeding on to the crossing and subsequently report that he is clear in the same way as for crossings with automatic half barriers.

3.3 Closed Circuit Television and Remotely Controlled Crossings Operated by a Signalman located some way from the Crossing.

These are also connected by telephone to the appropriate signal box and here again the driver of the snow-plough must always obtain permission by telephoning the controlling signalman before proceeding on to the crossing and subsequently report that he is clear.

3.4 Manually Controlled Crossings Operated by either a Crossing Keeper or a Signalman Located Adjacent to the Crossing

Snow-plough drivers must at all times obtain clearance from the signal-man or crossing keeper before driving on the level crossing.

3.5 Unmanned Uncontrolled Crossings, Usually Having Farm Type Gates or, Occasionally without Gates.

These are generally on minor roads; ploughing of unmanned uncontrolled crossings must only be carried out in accordance with prior arrangement made with British Rail.

4. EFFECTS OF PLOUGHING OPERATIONS

4.1 Snow-plough drivers must ensure, so far as it is possible, that accumulated snow is not deposited on railway tracks. Passing trains and rail snow-ploughs tend to leave windows of snow across the path of the carriageway. It is therefore suggested that highway authorities and British Rail co-ordinate plans which can be put into effect if and when this occurs.

4.2 After the crossing has been cleared the snow-plough driver must park his vehicle at a safe distance from the crossing, then return on foot to ensure that no solid objects have been deposited by the blade on or near the rails.

5. CROSSINGS UNSUITTABLE FOR PLOUGHING

There are some crossings which are dangerous or impossible to plough; for instance where the road descends steeply on both sides of the crossing, or where the rail protrudes to such an extent that plough blades might be fouled. For such crossings the local highway authority should consult the appropriate Divisional Civil Engineer of British Rail about the methods best employed to clear the snow.

6. PRIVATELY OWNED CROSSINGS

Where a level crossing is privately owned, agreement should be obtained from the owner by the local authority so that the authority can take the same action as they would in the case of a public crossing. Ploughing of unmanned uncontrolled crossings should only be carried out in accordance with prior arrangements made with British Rail – see paragraph 3.5 above.

7. VEHICLES TRAVERSING LEVEL CROSSING FITTED WITH SNOW PLOUGHS IN THE TRAVELLING POSITION (ie NOT IN USE)

When Department-owned vehicles are driven over level crossings, otherwise than for snow-clearing, the plough should always be locked in the raised position. Rotary ploughs should follow the requirements of the signs at level crossings concerning slow vehicles as set out in Diagram 649 of Traffic Signs (Amendment) and (Disqualification for offences) Regulations 1969.

8. GENERAL STANDARD OF CARE

Apart from the operational requirements detailed above, highway authorities must take special care to ensure that the strictest safety precautions are taken when winter maintenance vehicles are negotiating level crossings. All snow-plough drivers must be conversant with provisions of the Highway Code and in particular those parts about the use of level crossings.

9. SNOW CLEARING FROM ROADS OVER OR NEAR RAILWAY LINES

9.1 Snow ploughs of all types can throw snow and slush distances of 10 to 15 metres (the rotary type even more) when driven at speed. Drivers of snow plough vehicles must, therefore, be made aware of road bridges over railways and stretches of road near to railways, where they should operate at an appropriate speed in order to prevent thrown snow building up on railway lines or becoming a hazard to passing trains.

9.2 Particular care must be taken where there is a danger of thrown snow damaging or creating an electrical path from overhead railway electric power lines.

9.3 Care must be taken to avoid packing snow against bridge parapets, fences or walls such that, for instance, children could climb nearer to and so tamper with overhead electric power lines.

10. SNOW CLEARING FROM ROADS OVER OTHER ROADS AND ON DUAL CARRIAGEWAYS

10.1 The opportunity is taken to draw attention to similar problems in relation to road-over-road bridges where drivers of ploughs should be aware of the dangers of throwing snow on to the lower road which would become a hazard to traffic and pedestrians.

10.2 Excessive speed when ploughing snow on to the central reserves of dual carriageway roads can result in danger to oncoming traffic in the opposite carriageway. Drivers should adjust their speed to prevent this happening.

JMC/K

Room S6/18
Department of the Environment
2 Marsham Street London SW1P 3EB

Direct line 01-212 8338
Switchboard 01-212 3434

The Town Clerk	Your reference
The Chief Executive Officer	
The Greater London Council	Our reference
County Councils	HM1/922/1
District Councils	Date
London Borough Councils	11 August 1977
The Common Council of the City of London	

Dear Sir

**WINTER MAINTENANCE –
SNOW CLEARING AT RAILWAY LEVEL CROSSINGS, FROM ROAD BRIDGES
OVER RAILWAY AND ROAD SYSTEMS AND FROM ROADS IN THE VICINITY OF RAILWAYS**

1. The following amendment should be made to Circular Roads 18/77 dated 28 June 1977. In paragraph 7 of the Appendix the second sentence should now read – “Rotary ploughs should follow the requirements of the signs at level crossings concerning slow vehicles as set out in diagram 649 of The Traffic Signs Regulations and General Directions 1975.”

Yours faithfully

J L HAMMOND

**WINTER MAINTENANCE 2009/10
CITY OF YORK COUNCIL**

DAILY WINTER MAINTENANCE OPERATIONS REPORT

DATE SUPERVISOR

WEATHER DRY / FOG / RAIN / SLEET / SNOW - state depth

OPERATION PRE SALTING AND GRITTING / PLOUGHING / SALTING AND PLOUGHING

ROUTE 1 TIME OUT TIME IN
 NAME OF DRIVER ROAD STATE DRY / WET / SLUSH / SNOW
 DRIVER COMMENTS AFTER OPERATION

ROUTE 2 TIME OUT TIME IN
 NAME OF DRIVER ROAD STATE DRY / WET / SLUSH / SNOW
 DRIVER COMMENTS AFTER OPERATION

ROUTE 3 TIME OUT TIME IN
 NAME OF DRIVER ROAD STATE DRY / WET / SLUSH / SNOW
 DRIVER COMMENTS AFTER OPERATION

ROUTE 4 TIME OUT TIME IN
 NAME OF DRIVER ROAD STATE DRY / WET / SLUSH / SNOW
 DRIVER COMMENTS AFTER OPERATION

ROUTE 5 TIME OUT TIME IN
 NAME OF DRIVER ROAD STATE DRY / WET / SLUSH / SNOW
 DRIVER COMMENTS AFTER OPERATION

ROUTE 6 TIME OUT TIME IN
 NAME OF DRIVER ROAD STATE DRY / WET / SLUSH / SNOW
 DRIVER COMMENTS AFTER OPERATION

ROUTE 7 TIME OUT TIME IN
 NAME OF DRIVER ROAD STATE DRY / WET / SLUSH / SNOW
 DRIVER COMMENTS AFTER OPERATION

ROUTE 8 TIME OUT TIME IN
 NAME OF DRIVER ROAD STATE DRY / WET / SLUSH / SNOW
 DRIVER COMMENTS AFTER OPERATION

ROUTE 9 TIME OUT TIME IN
 NAME OF DRIVER ROAD STATE DRY / WET / SLUSH / SNOW
 DRIVER COMMENTS AFTER OPERATION

ROUTE 10 TIME OUT TIME IN
 NAME OF DRIVER ROAD STATE DRY / WET / SLUSH / SNOW
 DRIVER COMMENTS AFTER OPERATION

OTHER OPERATIONS

FOOTWAYS PRE SAND / PRE SALT / SNOW CLEARANCE
 TIME OUT TIME IN

CYCLE ROUTES PRE SAND / PRE SALT / SNOW CLEARANCE
 TIME OUT TIME IN

ANNEX 5

NETWORK TREATMENT ROUTE MAP

SEE ATTACHED PDF: GRITMAST.pdf

ANNEX 6

SNOW CLEARANCE ROUTE MAP

SEE ATTACHED PDF: Snow Clearance Routes.pdf

ANNEX 7

GRIT ROUTE MAPS 1-10

SEE ATTACHED PDF: GRIT_1.pdf
GRIT_2.pdf
GRIT_3.pdf
GRIT_4.pdf
GRIT_5.pdf
GRIT_6.pdf
GRIT_7.pdf
GRIT_8.pdf
GRIT_9.pdf
GRIT_10.pdf

STREETS INCLUDED ON WINTER E GRITTING ROUTES**ANNEX 8**

A1036	Beagle Ridge Drive
A1079 (non trunk sections)	Beckfield Lane
A1079 (trunk sections) H Agency grit route	Beech Avenue, Bishopthorpe
A1237 (non trunk sections)	Bellhouse Way
A1237 (trunk sections) H Agency grit route	Bishopgate Street
A166 to Stamford Bridge	Bishopthorpe Road
A19 (non trunk sections)	Blake Street (T)
A19 (trunk sections) H Agency grit route	Bland Lane
A59	Blossom Street
A64 (trunk road) H Agency grit route	Bootham
Acaster Lane	Bootham Terrace (T)
Acomb Road	Boroughbridge Road
Acomb Wood Drive	Bouthwaite Drive (T)
Acorn Way	Bowness Drive
Alcuin Avenue	Bradley Lane
Algarth Road	Bramham Avenue
Almsford Road	Bramham Road
Alness Drive	Brecks Lane, Strensall
Applecroft Road	Brecksfields
Appleton Road	Bridge Road
Ascot Way	Bridge Street
Asda access road Monks Cross	Broad Lane, Appleton Roebuck to Acaster Malbis
Ashford Place	Broadway
Ashley Park Road	Brockfield Park Drive
Askham Bar roundabout	Brockfield Road
Askham Bryan Lane	Brompton Road
Askham Fields Lane	Brunswick Street
Askham Lane	Burdyke Avenue
Askham Richard road to Angram	Burnsall Drive (T)
Askham Richard road to Healaugh	Burton Green
Audax Road	Burton Stone Lane
B1222 (Naburn)	Byland Avenue
B1224 (Wetherby)	Campleshon Road
B1228 (Elvington)	Carr Lane
B1363 (Wigginton)	Castle Mills Bridge (Tower Street)
Bad Bargain Lane	Cemetery Road
Balmoral Terrace	Chaloners Road
Barbican Road	Church Balk, Dunnington
Barfield Road	Church Lane, Bishopthorpe
Barkston Avenue	Church Lane, Wheldrake
Barons Crescent	Church Street, Dunnington

Notes: Not all streets listed will be gritted the entire length.

(T) denotes streets gritted by tow gritter.

STREETS INCLUDED ON WINTER GRITTING ROUTES

Clarence Street	Fishergate
Clementhorpe	Flaxman Croft
Clifford Street	Flaxton Road, Strensall
Clifton	Fordlands Road
Clifton Green	Foss Bank
Clifton Moor/B1363/A1237 access road	Foss Islands Road
Clifton Moorgate	Fossgate (T)
Collingwood Avenue	Fossway
Common Lane, Holtby	Fourth Avenue
Common Road, Dunnington	Foxwood Lane
Copmanthorpe Lane, Bishopthorpe	Front Street, Acomb
Copmanthorpe Road, Bishopthorpe	Front Street, Naburn
Coppergate	Fulfordgate
Corban Lane, Wigginton (H Agency grit route)	Fulford Cross
Cornlands Road	Fulford Road
Cowper Lane	Gale Lane
Crichton Avenue	Garfield Terrace
Cross Moor Lane	Garrow Hill Avenue
Crossfield Crescent	George Hudson Street
Crossways	Gillygate
Dalton Hill, Wheldrake	Glebe Avenue (T)
Dalton Terrace	Glen Road
Dane Avenue (T)	Grants Avenue
Danebury Drive	Grassholme
Danesfort Avenue	Great North Way
Dauby Lane, Elvington	Green Dike
Davygate	Green Dykes Lane
Deramore Drive	Green Lane, Acomb (T)
Dodsworth Avenue	Green Lane, Clifton
Driffield Terrace	Greengales Lane, Wheldrake
Eason View	Greenshaw Drive
East Parade	Grimston Bar Park and Ride roundabout
Eastfield Avenue	Haleys Terrace
Eastfield Crescent	Hallcroft Lane
Eastholme Drive	Hamilton Drive
Elmfield Avenue	Hamilton Drive East
Elvington Lane	Hamilton Drive West
Enfield Crescent	Harcourt Street
Fairfields Drive	Hauling Lane
Fawcett Street	Hawthorn Grove
Field Lane	Haxby Moor Road
Fifth Avenue	Haxby Road

Notes: Not all streets listed will be gritted the entire length.

(T) denotes streets gritted by tow gritter.

STREETS INCLUDED ON WINTER GRITTING ROUTES

Hazelbush Lane	Lendal Bridge
Heath Ride	Lindsey Avenue (T)
Hebden Rise (T)	Link Road, Huntington
Hempland Lane	Livingstone Street
Heslington Lane	Longwood Road
Heslington Road	Long Ridge Lane
Heworth Green	Lord Mayors Walk
Heworth Road	Lords Moor Lane
Heworth Village	Love Lane
Hob Moor Drive	Low Moor Lane
Hob Moor Terrace (T)	Low Lane
Hodgson Lane	Low Ousegate
Holgate Road	Lowther Street
Holly Bank Road	Lycett Road
Holly Tree Lane	Main Street, Askham Bryan
Holtby Lane	Main Street, Bishopthorpe
Hopgrove Lane South	Main Street, Copmanthorpe
Horseman Drive	Main Street, Elvington
Horseman Lane	Main Street, Fulford
Howard Drive	Main Street, Heslington
Hull Road	Main Street, Hessay
Huntington Road	Main Street, Knapton
Intake Lane, Bishopthorpe	Main Street, Naburn
James Street	Main Street, Poppleton
Jewbury	Main Street, Wheldrake
Jockey Lane	Malton Road
Kathryn Avenue	Malvern Avenue (T)
Keble Park North	Manor Drive North (T)
Keble Park South	Manor Drive South
Kent Street	Manor Heath
Kettlestring Lane	Maple Avenue
Kingsland Terrace	Martello Way
Kingsway North (north end)	Marygate
Kingsway West	Melrosegate
Knapton Lane	Merchant Way
Knavesmire Avenue	Merchantgate
Knavesmire Road	Micklegate
Lamplugh Crescent	Middlecroft Drive
Lawrence Street	Middlethorpe Drive
Layerthorpe	Middlethorpe Grove
Leeman Road	Mill Lane, Bishopthorpe
Leeside	Mill Lane, Hessay to Rufforth

Notes: Not all streets listed will be gritted the entire length.

(T) denotes streets gritted by tow gritter.

STREETS INCLUDED ON WINTER GRITTING ROUTES

Mill Lane, Heworth	Paragon Street
Mill Lane, Wigginton	Park Gate
Millfield Lane, Poppleton	Park Grove (T)
Monkgate	Parliament Street
Monks Cross Drive	Pavement
Monks Cross Link	Pear Tree Lane
Monkton Road	Peasholme Green
Montague Road	Penleys Grove Street
Moor Lane, Copmanthorpe	Philadelphia Terrace (T)
Moor Lane, Dringhouses	Piccadilly
Moor Lane, Haxby	Poppleton Road
Moor Lane, Skelton	Pottery Lane, Strensall
Moor Lane, Strensall	Prices Lane
Moor Lane, Wigginton	Princess Road
Moorcroft Road	Pulleyn Drive
Moorgate	Queen Annes Road (T)
Moorlands Road, Skelton	Queen Street
Mount Vale	Queen Victoria Street
Murton Lane, Murton	Ramsey Avenue, Bishopthorpe
Murton Way	Ramsay Close (T)
Museum Street	Rawcliffe Bar park and ride access road
Naburn Designer Park and Ride route	Rawcliffe Drive
Naburn Lane	Rawcliffe Lane
Navigation Road	Ridgeway
Nessgate	Rivelin Way
New Lane, Huntington	Rougier Street
New Road, Hessay	Ryecroft Avenue
Newland Park Close	Salisbury Road
Newland Park Drive	Salisbury Terrace
North Lane, Wheldrake	Sandy Lane, Stockton On The Forest
North Moor Road, Huntington	Scarcroft Hill (T)
Nunnery Lane	Scarcroft Road
Oak Tree Lane	School Lane, Askham Richard
Oak Wood	School Lane, Copmanthorpe
Oakdale Road	School Lane, Heslington
Oaken Grove	Sefton Avenue
Osballdwick Lane	Selby Road
Osballdwick Link Road	Sheriff Hutton Road to boundary
Osballdwick Village	Shipton Road
Ostman Road	Sim Balk Lane
Ouse Bridge	Skeldergate
Ox Carr Lane	Skeldergate Bridge

Notes: Not all streets listed will be gritted the entire length.

(T) denotes streets gritted by tow gritter.

STREETS INCLUDED ON WINTER GRITTING ROUTES

Sowerby Road (T)	Thief Lane
St. Denys Road	Thompson Drive
St. Giles Road	Thorganby Road
St. Giles Way	Top Lane
St. Helens Road	Tower Street
St. James Mount (T)	Townend Street
St. Leonards Place	Towthorpe Moor Lane
St. Maurices Road	Towthorpe Road
St. Nicholas Avenue (Naburn Shopping Site)	Tranby Avenue
St. Stephens Road	Tudor Road
Stamford Bridge Road	Turnmire Road
Station Avenue	University Road
Station Rise	Usher Lane
Station Road	Walmer Carr
Station Road, Copmanthorpe	Walmgate
Station Road, Haxby	Water End
Station Road, Poppleton	Water Lane
Stillingfleet Road (B1222)	Wentworth Road (T)
Stirling Road (Clifton Moor)	West Bank
Stockhill Lane, Askham Richard	West End, Strensall
Stockton Lane	West Nooks
Straight Lane, Holtby	West Pit Lane
Stray Road	West Thorpe
Straylands Grove	Westfield Lane
Strensall Road	Westfield Road
Sussex Road	Westminster Road
Stuart Road	Westlands Grove
Tadcaster Road	Wetherby Road
Tang Hall Lane	Wheatfield Lane
Tedder Road	Wheldrake (Main Street to boundary at Thicket)
Temple Lane	Wheldrake Lane (to boundary towards Escrick)
Ten Thorn Lane, Knapton	Wheldrake Lane (Wheldrake to Crockey Hill)
Thanet Road	Wheldrake Lane (Wheldrake to Elvington)
The Avenue, Clifton	Whip Ma Whop Ma Gate (T)
The Green, Acomb	White Rose Way
The Mount	Wigginton Road
The Stonebow	Wilton Rise (T)
The Village, Haxby	Windmill Lane
The Village, Skelton	Windmill Rise (T)
The Village, Stockton On The Forest	Windsor Garth
The Village, Strensall	Woodlands Grove
The Village, Wigginton	Woodlea Avenue

Notes: Not all streets listed will be gritted the entire length.

(T) denotes streets gritted by tow gritter.

STREETS INCLUDED ON WINTER E GRITTING ROUTES

Woodlea Bank
Yarburgh Way
Yearsley Grove
York Road, Acomb
York Road, Askham Bryan
York Road, Askham Richard
York Road, Dunnington
York Road, Elvington
York Road, Haxby
York Road, Naburn
York Road, Strensall
York Road, Wigginton
York Street, Dunnington

Notes: Not all streets listed will be gritted the entire length.
(T) denotes streets gritted by tow gritter.

GRIT ROUTE 1

- GRIT** Right James St, Left Layerthorpe, Left onto Foss Islands Rd, Right Navigation Rd, Left Walmgate, Left Foss Islands Rd, turn round at Morrisons roundabout, Left Foss Islands Road, Barbican Rd, Cemetery Rd, Right onto Fulford Rd, Fishergate, Right onto Paragon St, Fawcett St, Kent St.
- TRAVEL** Right onto Cemetery Rd to Fulford Rd.
- GRIT** Left onto Fulford Rd, Right Fulford Cross turn round at School, Right Fulford Rd, Left onto Broadway, Right onto Heslington Lane, Left into Fulfordgate turn round at School, Left onto Heslington Lane, Right onto Fulford Rd, Right Broadway, Heslington Lane, University Rd, Right onto Thief Lane, Right Newland Park Close, Left Newland Park Drive, Left Thief Lane, Right Garrow Hill Avenue, Left onto Hull Rd, Lawrence St, Barbican, Barbican Rd, Heslington Rd, Left onto Green Dykes Lane, Melrosegate to mini roundabout, Right onto Tang Hall Lane, Left onto Fifth Ave (turn round at end), Straight over Tang Hall Lane onto Fifth Ave, across Melrosegate, Right onto Fourth Ave, Right Tang Hall Lane, Right onto Hull Rd.
- TRAVEL** Right onto Melrosegate.
- GRIT** Right onto Alcuin Ave, Right onto Tang Hall Lane, Left onto Osbaldwick Lane, Around Osbaldwick Village, Murton Way to A166, Left to Stamford Bridge turn round at Cost Cutters, TRAVEL back on A166, GRIT Left Dunnington turn round at Main St, Left onto Grimston Bar, Hull Rd to Roundabout, Tranby Ave, Osbaldwick Link, left Hull Rd, Right to Park & Ride, Turn round at Roundabout, left onto Hull Rd, Left Windmill Lane, Left Field Lane, Left Sussex Road, Right onto Crossways, Right Yarburgh Way, Right Deramore Drive, Left Eastfield Cres, Left Field La to Hull Rd.
- TRAVEL** Hull Rd, Left onto Green Dykes Lane, University Rd.
- GRIT** University Rd (from roundabout), Left onto Field Lane, Right School Lane, Right Low Lane, Right Main St, Right Field Lane right at new round about (new bus interchange), right at roundabout, right field lane.
- TRAVEL** Left onto Hull Rd, Right onto Tang Hall Lane.
- GRIT** Melrosegate from Tang Hall Lane to East Parade, East Parade, Left onto Harcourt St, Right onto Fifth Ave, Reverse down Glen Rd, Layerthorpe.
- TRAVEL** Return to Depot.

GRIT ROUTE 2

- GRIT** Peasholme Green, The Stonebow, Pavement, Coppergate, Left Tower St, Paragon St, Right Barbican Rd, Right Kent St, Fawcett St, Fishergate, Tower St, Skeldergate Bridge, Bishopgate St, Left Clementhorpe turn round J/W Terry Ave, Nunnery Lane, Left Blossom St, The Mount, Right Dalton Terr, Right Holgate Rd, Left Blossom St, Left Queen St, Station Rd, Rougier St, George Hudson St, Left Bridge St, Low Ousegate, Clifford St.
- TRAVEL** Tower St.
- GRIT** Piccadilly, Merchantgate, Walmgate, St Deny's Rd, Right Piccadilly.
- TRAVEL** Coppergate, Low Ousegate, Bridge St.
- GRIT** Micklegate.
- TRAVEL** Blossom St, The Mount.
- GRIT** Scarcroft Rd, Left Bishopthorpe Rd, Nunnery Lane, Prices Lane, Left Skeldergate. Bishopthorpe Rd, Right Campleshon Rd, Right Knavesmire Ave, Brunswick St, Balmoral Terr.
- TRAVEL** Right Bishopthorpe Rd, Campleshon Rd to Knavesmire Ave.
- GRIT** Knavesmire Rd, Right Mount Vale, Left Dalton Terr, Left Driffield Terr, Love Lane, Left Knavesmire Rd, Turn Round in Layby, Left Mount Vale, Tadcaster Rd, Right Middlethorpe Dr, Lycett Rd, Middlethorpe Grove, Right Tadcaster Rd, Left St Helens Rd, Eason View, Leaside, Right West Thorpe, Right Thanet Rd, Right Eason View, Right Chaloners Rd, Right Thanet Rd.
- TRAVEL** Right West Thorpe, Leaside, Right Eason View.
- GRIT** Left Chaloners Rd, Left Moor Lane, Right into Park & Ride Turn Round at Roundabout at Park & Ride Height Barrier, Right Tadcaster Rd, Under A64 to Copmanthorpe, turn round at Fox & Hounds Pub, Tadcaster Rd, Left Pulleyn Dr turn round at end of road.
- TRAVEL** Tadcaster Rd, Left St Helens Rd, Thanet Rd.

GRIT ROUTE 2 (Cont'd)

- GRIT** Right Danesfort Ave, Left Stuart Rd, Right Tudor Rd, Right Kingsway West, Windsor Garth, Ashford Place, Ascot Way, Right Kingsway West, Left Danesfort Ave, Right Gale Lane, Right Tudor Rd, Hamilton Dr, Right Collingwood Ave, Left Hob Moor Dr, Holly Bank Rd, Right Hamilton Dr, Left Holgate road, Left Acomb Road, Left Moorgate.
- GRIT** Right Hamilton Dr, Right Green Lane, Front St, Gale Lane, Right Foxwood Lane, Left Askham Lane to Ring Road, Turn Round.
- TRAVEL** Askham Lane, Right Foxwood.
- GRIT** Right Bellhouse Way (full loop), Right Acomb Wood Dr, Alness Dr, Left Moor Lane, Right through Layby, Left to Ring Road, Turn Round, Moor Lane, Left Moorcroft Rd, Acorn Way, Rycroft Ave, Grassholme, Left Moor Lane.
- TRAVEL** Right Tadcaster Rd.
- GRIT** Left Sim Balk Lane, Left Main St, Left Bishopthorpe Rd to Campleshon Rd.
- TRAVEL** Bishopthorpe Rd, Left Tower St, Left Piccadilly, Right Merchantgate.
- GRIT** Walmgate to J/W Foss Islands Rd.
- TRAVEL** Return to Depot.

GRIT ROUTE 3

- GRIT** Left onto James St, Right Lawrence street, Left James St, Right Lawrence street, Right Foss Islands Rd, Jewbury, St Maurice's Rd, Monkgate, Right Foss Bank, Right down slip road.
- TRAVEL** Jewberry, St Maurice's Rd, Monkgate.
- GRIT** Heworth Green, Right Heworth Rd, Left Heworth Village, Left Hempland Lane to Stockton Lane.
- TRAVEL** Left Stockton Lane to Roundabout.
- GRIT** Stockton Lane, Right Algarth Rd, Applecroft, Left Ashley Park Rd, Left Stockton Lane, Left Algarth, Applecroft, Stray Rd, Right Bad Bargain Lane, Fourth Ave, Right Fifth Ave, Right Harcourt St, Mill Lane.
- TRAVEL** Left Heworth Green, round roundabout back to Malton Rd.
- GRIT** Malton Rd, Left Monks Cross, Left Park and Ride, Left Monks Cross right at roundabout, turn around at roundabout at Asda, Left at roundabout, Left Malton Rd, turn around at roundabout, Left Hopgrove Lane South, Left Stockton Lane, Turn around at Holtby Lane End, Stockton Lane, right Straylands Grove, Right Malton Rd, Left Elmfield Ave, Right Monkton Road, Barfield Rd, Sefton Ave, Right Elmfield Ave, Left Monkton Rd, Right Byland Ave, Right Huntington Rd, Right Brockfield Park Dr, Right New Lane.
- TRAVEL** Left Malton Rd, Left Monks Cross.
- GRIT** Right slip road to rear of Asda, turn around at Roundabout, Right Monks Cross, 3rd Exit on roundabout to rear of Monks Cross, Second Roundabout, Left A1237, Turn around at Roundabout.
- TRAVEL** Monks Cross, Right at roundabout, Left at Round about,
- GRIT** Right at roundabout, Left Aldi, to entrance of Park & Ride, Left Jockey Lane to New Lane.
- TRAVEL** Left New Lane, Right Brockfield Park Drive, Left Huntington Rd.
- GRIT** JNC of Mini roundabout Byland Ave, Huntington Rd, Right Penleys Grove St, Right Clarence St, Right Lowther St.
- TRAVEL** Right Monkgate

GRIT ROUTE 3 (Cont'd)

GRIT Right Lord Mayors Walk, Right Clarence St, Left Wigginton Rd, Left Clifton Moorgate (Bumper Castle), Left Water Lane, Right Brompton Rd, Right Rawcliffe Lane, Right Rawcliffe Dr, Right Water Lane, Left Burdyke Ave, Round Roundabout, Left Burton Green, Right Burton Stone Lane.

TRAVEL Right Clifton.

GRIT Right Water End. To bottom of Brompton Rd

TRAVEL Right Burdyke Ave

GRIT Crichton Ave.

TRAVEL Right Wigginton Rd to J/W Haxby Rd.

GRIT Haxby Rd from Wigginton Rd to Haleys Terr.

TRAVEL Return to Depot.

GRIT ROUTE 4

- GRIT** Gillygate, St Leonards Place, Museum St
- TRAVEL** Lendal Bridge.
- GRIT** Station Rd, Station Ave.
- TRAVEL** Lendal Bridge, Museum St, St Leonards Place.
- GRIT** Bootham, Left Marygate, Left Bootham, Left Bootham Terr, Left Clifton, Clifton Green, Left Water End, Left Westminster Rd, Left The Avenue, Left Clifton Green, Right onto Water End, Right onto Clifton, Right onto Clifton Green, Left onto Water End, Left onto Poppleton Rd, Right Acomb Rd, Left onto West Bank (turn round at end), Left onto Acomb Rd, York Rd, Left at Roundabout, Right onto Front St, Askham Lane, Turn round at roundabout with Foxwood Lane, Right onto Cornlands Rd, Right onto Gale Lane, Right onto St Stephens Rd.
- TRAVEL** Left onto Cornlands rd, Right onto Askham Lane.
- GRIT** Ridgeway, Bramham Ave, Left onto Bramham Rd, Left onto Barkston Ave, Left onto Ridgeway, Right onto York Rd, Right The Green to Askham La, Front St, Left York Rd, turn round at Beckfield La roundabout, Left onto Carr Lane, Left Woodlea Bank turn round, Left Carr Lane, Right onto Boroughbridge Rd, Right onto Carr Lane, Left onto Almsford Rd, Woodlea Ave, Right onto Danebury Ave.
- TRAVEL** Right onto Acomb Green.
- GRIT** Right onto Beckfield Lane, Right onto Ostman Rd.
- TRAVEL** Left onto Danebury Drive, Woodlea Ave, Right onto Almsford Rd, Left onto Carr Lane.
- GRIT** Left onto Boroughbridge Rd, A1237 from Boroughbridge Rd to Copmanthorpe roundabout, Right Askham Bryan, Right Askham Bryan Lane to A1237.
- TRAVEL** Left A1237 to Wetherby Rd.
- GRIT** Right Wetherby Rd, Left Beckfield La, Left Knapton La, Ten Thorn La, Main St, Left A1237, Left Wetherby Rd, Left Bland La.
- TRAVEL** Right onto Knapton La, Left Beckfield La, Right Boroughbridge Rd, Left onto Water End.

GRIT ROUTE 4 (Cont'd)

GRIT Right onto Salisbury Rd, Salisbury Terr, Right onto Kingsland Terr, Right onto Garfield Terr, Right onto Livingston St, Right onto Salisbury Terr, Right onto Kingsland Terr, Left onto Leeman Rd to Station Rise.

TRAVEL Return to Depot.

GRIT ROUTE 5

- GRIT** Holgate Rd from The Mount to The Fox Pub, Poppleton Rd, Boroughbridge Rd Jnc with Car Lane.
- TRAVEL** Boroughbridge Rd, Left A1237
- GRIT** Right Wetherby Road to Boundary, turn round, Return to Mill Lane, Left towards Hessay to T Jnc, turn around, back to Wetherby Rd, Left to Rufforth, Right onto Bradley Lane to T Jnc right to Boundary, Turn around and Return to Jnc, to Askham Richard, Right at junction to boundary, turn round and return towards Staggered Crossroads, Right to Buckles Inn, Turn Around, Return to Staggered Cross Roads, Right York Rd to j/w Askham Fields Lane.
- TRAVEL** Right A1237 Roundabout
- GRIT** From Roundabout over A64, Left Manor Heath, School Lane, Left Horseman Lane, Left Horseman Dr, Right Manor Heath, Right Hallcroft Lane, Top Lane Right Merchant Way, Left Flaxman Croft, Right Merchant Way, Left Top Lane, Left Horseman Lane, Main Street, Left Station Rd, Left St Giles Way, 2nd Right Barons Crescent, Right St Giles Way, Left Main Street Left Station Rd, Temple Lane over Cross Roads, Cowper Lane to Acaster Malbis, Left Hauling Lane, Acaster Lane to Bishopthorpe, Left into Keble Park North.
- TRAVEL** Right Acaster Lane, Hauling Lane to Mill Lane.
- GRIT** Left Mill Lane, Intake Lane to T Jnc Right to Boundary, Turn Around back to Appleton Rd, Left to Bishopthorpe, Left Bridge Rd, to T Jnc, Turn Around, Back to Appleton Road, Left Main St, Left
- GRIT** Bishopthorpe Rd, Left Church Lane, Left Sim Balk Lane, Right Appleton Rd, Right Copmanthorpe Lane, Turn Around at the end, Return
- GRIT** Right Appleton Rd, Left Maple Ave, Left Montague Rd, Right Acaster Lane, Right Ramsey Ave, Left Montague Rd, Right Acaster Lane, Right Ramsey Ave, Left Montague Rd, Left Lamplugh Cres., Right Lamplugh Cres, Left Keble Park North, Left Acaster Lane to Main Street.
- TRAVEL** Return to Depot.

GRIT ROUTE 6

- GRIT** Shipton Rd to A1237, turn around roundabout, Shipton Road, Left into New Park & Ride entrance, Left A19, turn round at Benningbrough Rd junction (Sidings Restaurant, 1km past York Boundary).
- TRAVEL** Return on A19.
- GRIT** Left Fairfield Drive, Brecksfields (full loop), Right The Village, Moorlands Rd turn round J/W Corban Lane (Browns Nursery), St Giles Rd.
- TRAVEL** Left Shipton Rd.
- GRIT** Left Rawcliffe Lane, Left Eastholme Drive, Left Howard Drive, Left at Mitre Pub, Left Bowness Drive grit around island, Right Eastholme Drive, Left Green Lane, Left Water Lane, Left Clifton Moorgate, 2nd left Oakdale Rd, Left Clifton Moorgate, Left at roundabout onto Longwood Rd, Rivelin Way, Left Oakdale Rd.
- GRIT** Right Clifton Moorgate
- GRIT** Left Kettlestring Lane, Right Audax Rd, Right Stirling Rd, Right at roundabout turn round at A1237 roundabout, Return on Stirling Rd, round roundabout at Screwfix, Carry on down Stirling Rd, Right Clifton Moorgate, Turn round at A1237, Left Kettlestring Lane, Left Clifton Moorgate, Left Wigginton Rd over Ring Road, Turn Round at Boundary (Reliance Grange).
- TRAVEL** Back down Wigginton Rd.
- GRIT** Left Mill lane, The Village, around roundabout, Left Usher Lane, Left Oaken Grove, Left Moor Lane, Right The Village, Left Westfield Lane, Green Dike, Eastfield Ave, Left York Rd, Left Holly Tree Lane, Right Greenshaw Drive, Left Westfield Lane, Right Walmer Carr, Right Mill Lane, The Village, Right Westfield Lane, Left Greenshaw Drive, Left Westfield Road
- TRAVEL** Right The Village, Right York Road, Right Holly Tree Lane, Right Oak Tree Lane
- GRIT** Left Wheatfield Lane, Left Eastfield Ave, Left York Road, Left Holly Tree Lane, Left Oak Tree Lane, Left Eastfield Avenue.
- TRAVEL** To A1237 Turn Left onto A1237 to Roundabout at Junction With Malton Road.
- GRIT** Malton Road from Junction With A1237 to Heworth Road. (Inc Bus Lane)
- TRAVEL** Return to Depot.

GRIT ROUTE 7

- GRIT** Dodsworth Ave from Heworth Green, Fossway, Haleys Terr, Right Haxby Rd, Right Link Road, Turn Around Roundabout, Right to Haxby, Right Station Rd, Left Usher Lane to Boundary, Turn Round Left Station Rd, 2nd Right into West Nooks Loop to Station Rd, Right Towthorpe Rd, Left at Strensall Rd Junction, Left York Rd, West End, Left West Pit La, Middlecroft Dr, Left West End, Right over bridge Haxby Moor Rd to Wigginton, Left The Village, Left Usher Lane return to West End, Left York Rd, Left The Village, Left Sheriff Hutton Rd and Turn Round at Boundary (Second Cattle Grid), Return, Right at Oak Wood, Turn Round at Boundary (Ent High Roans House).
- TRAVEL** Right Sheriff Hutton Rd, Right The Village.
- GRIT** Left Princess Rd, Moor Lane, Left Flaxton Rd to Boundary (Cattle Grid), Turn Round.
- TRAVEL** Return along Flaxton Rd.
- GRIT** Right Lords Moor Lane, Right Brecks Lane, Left Park Gate, Right Heath Ride, Right Thompson Dr, Right Brecks La, Right The Village.
- TRAVEL** Left Princess Rd, Moor Lane.
- GRIT** Right Ox Carr Lane, Strensall Rd, Huntington Rd, Right Link Rd, Turn around at Roundabout, Right Huntington Rd,
- TRAVEL** Left Brockfield Park Dr
- GRIT** Left New Lane, North Moor Rd, Strensall Rd, Right to Stockton on Forest, Towards Warthill, Turn Round at Boundary, Left Through Stockton on Forest, Turn Left to Holtby, Left Towards Warthill, Turn Round at Boundary, Through Holtby Village to A166.
- TRAVEL** Return to Depot.

GRIT ROUTE 8

- GRIT** Hull Rd from Black Bull, Grimston Bar Roundabout (ALL), Right Elvington Lane, Main St, Over Bridge, Turn Round.
- TRAVEL** Back through Main St.
- GRIT** Right to Kexby (Side of School) to A1079, Turn Round.
- TRAVEL** Back to Elvington, Right to Wheldrake Lane.
- GRIT** Left to Wheldrake, Right at School, Left Main St to Boundary at Thicket Priory (Thorganby), Turn Round.
- TRAVEL** Back to Wheldrake Lane.
- GRIT** Right Wheldrake Lane to School, Turn Round at Junction, Right Main St, Left Towards Escrick, Turn Round at Boundary (Wheldrake Grange).
- TRAVEL** Back to Wheldrake.
- GRIT** Left to Cockey Hill J/W A19.
- TRAVEL** Left A19, Right to Naburn.
- GRIT** Left Naburn Lane to Boundary (Moreby Hall), Turn Round.
- TRAVEL** Back to Naburn Village.
- GRIT** Left in Village to School, Left Naburn Lane to J/W A19, Right to Second Roundabout, Turn Round (Both Roundabouts) Right St Nicholas Ave (around McArthur Glen Circuit), Return on A19, Right Fordlands Rd, Left Crossfield Cres, Right Fordlands Rd, Right Fulford Rd to Heslington Lane.
- TRAVEL** Return to Depot.

TRAILER MOUNTED GRITTER ROUTE 9

Fulford Cross
Scarcroft Hill
St James Mount
Wentworth Road
Philadelphia Terrace

Hob Moor Terrace

Wilton Rise
Windmill Rise
Green Lane
Dane Ave
Manor Drive South
Hebden Rise
Bouthwaite Drive
Burnsall Drive
Sowerby Road
Manor Drive North
Malvern Avenue
Glebe Avenue
Lindsey Avenue

Queen Annes Road
Bootham Terrace
Blake street
Davygate
Park Grove
Ramsey Close

Whip Ma Whop Ma Gate
Fossgate

GRIT ROUTE 10

- GRIT** A59 from A1237 to boundary at Turn Bridge, turn round and return on A59, Right Hessay, Right Main St to boundary. Return on A59, Left Hodgson Lane, Right Station Rd.
- TRAVEL** Left A59, Left A1237
- GRIT** Right Millfield Lane to Poppleton, Left Main St, Left Long Ridge Lane, Right Millfield Lane, Right Great North Way, Left White Rose Way, Return to A1237, Right to A64 at Hopgrove Roundabout. Grit all the way around each roundabout on route.
- TRAVEL** A64 to Grimston Bar.
- GRIT** A1079 to Kexby turn round at Kexby House.
- TRAVEL** Return on A1079 to Dunnington
- GRIT** Right Common Lane, Left Main St to A1079.
- TRAVEL** Right A1079, Left on A64 to A19.
- GRIT** Roundabouts under A64, grit A19 to Escrick turn round in junction opposite the church.
- TRAVEL** Return to depot.

**WINTER MAINTENANCE
CITY OF YORK COUNCIL**

**FOOTWAY SNOW CLEARANCE & PRECAUTIONARY TREATMENT
ROUTES**

The following footways are to be cleared of snow as and when necessary:

- | | |
|----------------------|--------------------------------------|
| Priority Footways | - Refer to plans for exact locations |
| City centre | - Various sections see plan |
| Acomb | - Front Street, Acomb |
| Old School Court | - See plan for section |
| William Plows Avenue | - See plan for section |
| Wentworth Road | - See plan for section |
| Scarcroft Hill | - See plan for section |
| St Helen's Road | - See plan for section |

SEE ATTACHED PDF FILES: GRITCNT1.pdf
 GRITACO.pdf
 GRITOSCP.pdf
 GRITWPA.pdf
 GRITWRSH.pdf
 St Helens Rd Footways.pdf

LOCATION	WARD
15 BECKFIELD LANE	ACOMB
O/S 35/37 RUNSWICK AVENUE	ACOMB
ON GRASS VERGE NEAR NO 9 STAITHES CLOSE	ACOMB
INSIDE SCHOOL GROUNDS BECKFIELD LANE	ACOMB
ENTRANCE TO CARR JUNIOR SCHOOL OSTMAN ROAD	ACOMB
KIRK VIEW OUTSIDE 1	ACOMB
O/S 30/32 GRANGER AVENUE	ACOMB
BECKFIELD LANE OUTSIDE POST OFFICE	ACOMB
LOW POPPLETON LANE NEAR SCHOOL ENTRANCE	ACOMB
MILLGATES AT SIDE OF 16	ACOMB
LANGHOLME DRIVE OUTSIDE 70	ACOMB
WHEATLANDS GROVE NEAR 1	ACOMB
BOROUGHBRIDGE ROAD J/W PLANTATION DRIVE O/S P.O.	ACOMB
JUTE ROAD O/S 90/92	ACOMB
SIM BALK LANE NEAR ENTRANCE TO INFANTS SCHOOL	BISHOPTHORPE
COPMANTHORPE LANE NEAR ENTRANCE TO JUNIOR SCHOOL	BISHOPTHORPE
MAIN STREET NEAR LIBRARY	BISHOPTHORPE
DAUBY LANE ENTRANCE TO ELVINGTON C E SCHOOL	WHELDRAKE
MAIN STREET NEAR POST OFFICE (Elv)	WHELDRAKE
FRONT STREET O/S POST OFFICE (nab)	WHELDRAKE
YORK ROAD NEAR SCHOOL	WHELDRAKE
BROAD HIGHWAY NEAR ENTRANCE TO SCHOOL	WHELDRAKE
MAIN STREET NEAR POST OFFICE	WHELDRAKE
HAXBY ROAD IN GROUNDS OF HAXBY ROAD PRIMARY SCHOOL	CLIFTON
HAXBY ROAD NEAR POST OFFICE	CLIFTON
GREENCLIFFE DRIVE O/S 16/18	CLIFTON
WESTMINISTER ROAD ADJ 47	CLIFTON
WATER END J/W GREENCLIFFE DRIVE	CLIFTON
O/S NO 6 BURTON AVENUE	CLIFTON
HAUGHTON ROAD JUNCTION FIELD VIEW	CLIFTON
EVELYN CRESCENT	CLIFTON
POTTERY LANE	CLIFTON
IMPERIAL COURT (ASHTON AVENUE)	CLIFTON
MORRELL HOUSE (BURTON ST LANE)	CLIFTON
GARDEN FLATS LANE OUTSIDE 24	DUNNINGTON
PEAR TREE LANE IN SCHOOL GROUNDS	DERWENT
YORK STREET OPP 42	DERWENT
MANOR DRIVE O/S NO 7	DERWENT
EASTFIELD LANE OPPOSITE JUNCTION WITH HOLY TREE LA	DERWENT
BURNHOLME AVENUE O/S 50	HEWORTH WITHOUT
WHITBY AVENUE ENTRANCE TO HEMPLAND SCHOOL	HEWORTH WITHOUT
STOCKTON LANE JCN HEMPLAND LA	HEWORTH WITHOUT
WOODLANDS GROVE JCN ELMPARK WAY	HEWORTH WITHOUT
LAWNWAY NEAR 13	HEWORTH WITHOUT
BRAMLEY GARTH SIDE OF 52	HEWORTH WITHOUT
GALTRES ROAD J/W LARCHFIELD	HEWORTH WITHOUT
BECKWITH CLOSE OPPOSITE 4	HEWORTH WITHOUT
STOCKTON LANE JCN ASHLEY PARK RD	HEWORTH WITHOUT
OSBALDWICK LANE ENTRANCE TO DERWENT JUNIOR SCHOOL	OSBALDWICK
JUNCTION OF MURTON WAY/MURTON GARTH	OSBALDWICK

LOCATION	WARD
MURTON WAY OUTSIDE PRIMARY SCHOOL	OSBALDWICK
HAMBLETON AVENUE IN SCHOOL GROUNDS	OSBALDWICK
BROUGHTON WAY JUNCTION WITH OSBALDWICK LANE	OSBALDWICK
ANNAN CLOSE ADJ 9	DRINGHOUSES & WOODTHORPE
SPEY BANK J/W ANNAN CLOSE	DRINGHOUSES & WOODTHORPE
EDEN CLOSE J/W MOOR LANE	DRINGHOUSES & WOODTHORPE
JCN NEAR MOOR LANE WITH JXN OF MOORCROFT	DRINGHOUSES & WOODTHORPE
NAIRN CLOSE NEAR VENT COLUMN	DRINGHOUSES & WOODTHORPE
ORRIN CLOSE O/S 29	DRINGHOUSES & WOODTHORPE
SILVERDALE COURT NEAR LAMP COLUMN 1	DRINGHOUSES & WOODTHORPE
WORDSWORTH CRES - PATH ACROSS GREEN OPP LITTER BIN	DRINGHOUSES & WOODTHORPE
SUMMERFIELD ROAD NEAR 33	DRINGHOUSES & WOODTHORPE
LOWICK OPPOSITE 7	DRINGHOUSES & WOODTHORPE
SUMMERFIELD ROAD AT ENTRANCE TO PRIMARY SCHOOL	DRINGHOUSES & WOODTHORPE
ALNESS DRIVE OPPOSITE 53	DRINGHOUSES & WOODTHORPE
DEVERON WAY O/S NO 12	DRINGHOUSES & WOODTHORPE
NEVIS WAY NEAR NO 14	DRINGHOUSES & WOODTHORPE
HILLCREST GARDENS NEAR J/W HOB MOOR TERRACE	DRINGHOUSES & WOODTHORPE
MIDDLETHORPE GROVE J/W THE SPINNEY	DRINGHOUSES & WOODTHORPE
MIDDLETHORPE GROVE O/S NO 32	DRINGHOUSES & WOODTHORPE
GANTON PLACE NEAR LAMP COLUMN 2	DRINGHOUSES & WOODTHORPE
DON AVENUE O/S 34	DRINGHOUSES & WOODTHORPE
DON AVENUE J/W SWALE AVENUE	DRINGHOUSES & WOODTHORPE
WEST THORPE NEAR 5	DRINGHOUSES & WOODTHORPE
LEESIDE O/S NO 7	DRINGHOUSES & WOODTHORPE
ST JAMES PLACE NEAR 10	DRINGHOUSES & WOODTHORPE
ST HELENS ROAD NEAR SCHOOL ENTRANCE	DRINGHOUSES & WOODTHORPE
NORTH LANE ON CORNER	DRINGHOUSES & WOODTHORPE
ORCHARD WAY J/W ORCHARD CLOSE	DRINGHOUSES & WOODTHORPE
NORTH LANE NEAR J/W ORCHARD WAY	DRINGHOUSES & WOODTHORPE
SOUTHFIELD CRESCENT ON BEND	DRINGHOUSES & WOODTHORPE
HERDSMAN ROAD IN CAR PARK	DRINGHOUSES & WOODTHORPE
THE HORSESHOE	DRINGHOUSES & WOODTHORPE
ROYAL CHASE	DRINGHOUSES & WOODTHORPE
HESLINGTON ROAD ENTRANCE TO ST LAWRENCES SCHOOL	FISHERGATE
SANDRINGHAM STREET SIDE OF 17	FISHERGATE
FISHERGATE ENTRANCE TO ST GEORGES PRIMARY SCHOOL	FISHERGATE
BROADWAY OUTSIDE POST OFFICE	FISHERGATE
FULFORD CROSS ENTRANCE TO SCHOOL	FISHERGATE
FISHERGATE PRIMARY SCHOOL	FISHERGATE
JCN THIEF LANE / KEXBY AVENUE	FISHERGATE
NORWAY DRIVE SIDE OF 9 DANESMEADE	FISHERGATE
MAPLE GROVE AT THE BOTTOM	FISHERGATE
MAIN STREET OUTSIDE POST OFFICE	FULFORD
FULFORD MEWS IN GROUNDS OF 1	FULFORD
DELWOOD OPP 14	FULFORD
FULFORDGATE OPPOSITE 11	FULFORD
GLEN CLOSE NEAR LAMP POST 1	FULFORD
SCHOOL LANE ENTRANCE TO FULFORD C OF E SCHOOL	FULFORD
FORDLANDS CRESCENT ADJ NO 19	FULFORD
SCHOOL LANE ENTRANCE TO HESLINGTON PRIMARY SCHOOL	HESLINGTON
WALMGATE OUTSIDE POST OFFICE	GUILDHALL

LOCATION	WARD
HOPE STREET O/S 44	GUILDHALL
ST MARGARETS TERRACE TOP OF STEPS	GUILDHALL
TOWNEND STREET J/W PILGRIM STREET	GUILDHALL
TOWNEND STREET J/W DEL PYKE	GUILDHALL
MANSION HOUSE	GUILDHALL
BOWLING GREEN LANE NEAR COPTON HOUSE	GUILDHALL
HUNT COURT O/S NO 2	GUILDHALL
STATION ROAD O/S RALPH BUTTERFIELD PRIMARY SCHOOL	HAXBY & WIGGINTON
BIRCH LANE SIDE OF 27	HAXBY & WIGGINTON
WESTFIELD LANE NEAR WIGGINTON PRIMARY SCHOOL	HAXBY & WIGGINTON
ROCHE AVENUE INSIDE COMMUNITY CENTRE GROUNDS	HEWORTH
GERARD AVENUE NEAR POST OFFICE	HEWORTH
SIXTH AVENUE TANG HALL PRIMARY SCHOOL	HEWORTH
THORN NOOK ON GRASSED AREA	HEWORTH
MUNCASTERGATE GRASS VERGE OPPOSITE 3	HEWORTH
HEWORTH ROAD IN GROUNDS OF HEWORTH PRIMARY SCHOOL	HEWORTH
FOSSWAY NEXT TO NOTICE BOARD	HEWORTH
FOSSWAY END OF CUL DE SAC	HEWORTH
ARRAN PLACE LAMP COLUMN 3	HEWORTH
OUTSIDE GLEN LODGE, SIXTH AVE	HEWORTH
JUBLIEE TERRACE, NEAR ST BARNABAS CHURCH	HOLGATE
ALDBOROUGH WAY OPP 72	HOLGATE
CLIVE GROVE J/W HOLLY BANK ROAD	HOLGATE
NURSERY DRIVE NEAR ENTRANCE TO SCHOOL	HOLGATE
HOWE HILL ROAD OPPOSITE JUNCTION OF DILYS GROVE	HOLGATE
BOUTHWAITE DRIVE NEAR AYSGARTH HOUSE	HOLGATE
BIRSTWITH DRIVE OPPOSITE 7	HOLGATE
BURNSALL DRIVE OPPOSITE 6	HOLGATE
BURNSALL DRIVE OPPOSITE 9	HOLGATE
ACOMB ROAD IN GROUNDS OF OAKHAVEN OLD PEOPLES HOME	HOLGATE
POPPLETON ROAD PRIMARY SCHOOL	HOLGATE
LYNDEN WAY JUNCTION WITH HOBGATE	HOLGATE
WEST BANK NEAR LAMP COLUMN 3	HOLGATE
WINDMILL RISE NEAR WINDMILL	HOLGATE
WINDMILL RISE J/W POPPLETON ROAD	HOLGATE
HAMILTON DRIVE EAST J/W BARBARA GROVE	HOLGATE
WELLAND RISE	HOLGATE
OUTSIDE TALBOT HOUSE, CAMBRIDGE STREET	HOLGATE
OUTSIDE DORSET HOUSE, LOWTHER TERRACE	HOLGATE
WELBORN CLOSE NEAR 36	HULL ROAD
ALLEN CLOSE NEAR 23	HULL ROAD
FLAXTON AVENUE IN GROUNDS OF RESPITE HOME	HULL ROAD
INGLEBOROUGH AVENUE O/S 14	HULL ROAD
BROUGHTON WAY NEAR 29	HULL ROAD
YARBURGH WAY NEAR ENTRANCE TO ARCHBISHOPS SCHOOL	HULL ROAD
CROSSWAYS ENTRANCE TO BADGER HILL INFANTS	HULL ROAD
GARTH ROAD O/S LIBRARY	HUNTINGTON & NEW EARSWICK
NORTH MOOR ROAD HUNTINGTON PRIMARY SCHOOL	HUNTINGTON & NEW EARSWICK
HUNTINGTON ROAD O/S HUNTINGTON SCHOOL	HUNTINGTON & NEW EARSWICK
YEARSLEY GROVE J/W HUNTINGTON ROAD	HUNTINGTON & NEW EARSWICK
WHENBY GROVE NEAR ENTRANCE TO SCHOOL	HUNTINGTON & NEW EARSWICK
HAXBY ROAD ENTRANCE TO JOSEPH ROWNTREE SCHOOL	HUNTINGTON & NEW EARSWICK

LOCATION**WARD**

LOCATION	WARD
HAXBY ROAD ENTRANCE TO NEW EARSWICK PRIMARY SCHOOL	HUNTINGTON & NEW EARSWICK
HAWTHORNE TERRACE NEW EARSWICK LIBRARY	HUNTINGTON & NEW EARSWICK
CHURCH LANE HUNTINGTON, NEAR ENTRANCE TO CHURCH GROUNDS	HUNTINGTON & NEW EARSWICK
LOWER EBOR STREET	MICKLEGATE
BISHOPGATE STREET O/S 1	MICKLEGATE
SCARCROFT GREEN NEAR SCARCROFT PRIMARY SCHOOL	MICKLEGATE
SIDE OF 10 BUCKINGHAM STREET	MICKLEGATE
O/S BRACKENHILL ST GEORGES PLACE	MICKLEGATE
NORFOLK STREET OPPOSITE 4	MICKLEGATE
ST CLEMENTS GROVE	MICKLEGATE
OVINGTON TERRACE O/S SCHOOL GATES NEXT TO BIN	MICKLEGATE
OVINGTON TERRACE OPP 14/16	MICKLEGATE
SCARCROFT HILL J/W WENTWORTH ROAD	MICKLEGATE
NUNTHORPE AVENUE ENTRANCE TO SCHOOL	MICKLEGATE
BEWLAY STREET OPP 18B	MICKLEGATE
CLEMENTHORPE NEXT TO SUB STATION	MICKLEGATE
CLEMENTHORPE JCN TERRY AVE O/S 1	MICKLEGATE
CUSTANCE WALK OPP 10	MICKLEGATE
FENWICK STREET BETWEEN 4 & 10	MICKLEGATE
FENWICK STREET OPP 51 NEXT TO DOG BIN	MICKLEGATE
RICHARDSON STREET O/S 17	MICKLEGATE
TECK STREET OPPOSITE 6	MICKLEGATE
BISHOPTHORPE ROAD CAR PARK	MICKLEGATE
ST BENEDICTS ROAD OUTSIDE BARSTOW HOUSE	MICKLEGATE
GARDENERS CLOSE OPP 25	RURAL WEST YORK
CHURCH CLOSE O/S NO 5 (Ask B)	RURAL WEST YORK
SCHOOL LANE (Ask R)	RURAL WEST YORK
MAIN STREET ON GREEN OPPOSITE POST OFFICE (Cop)	RURAL WEST YORK
MOOR LANE OUTSIDE CEMETERY (Cop)	RURAL WEST YORK
MAIN STREET O/S NO 4 (Hessay)	RURAL WEST YORK
RIVERSIDE WALK O/S 1 (Nether Pop)	RURAL WEST YORK
EBOR WAY JCN ALLERTON DRIVE	RURAL WEST YORK
BACK LANE (Rufforth) J/W MAIN STREET	RURAL WEST YORK
WETHERBY ROAD NEAR PRIMARY SCHOOL	RURAL WEST YORK
THE AVENUE OPPOSITE 1	RURAL WEST YORK
BRADLEY CRESCENT NEAR 1	RURAL WEST YORK
WESTFIELD LANE J/W WESTFIELD CLOSE	RURAL WEST YORK
SPRINGFIELD ROAD OPP 33	RURAL WEST YORK
SPRINGFIELD ROAD J/W DIKELANDS LANE	RURAL WEST YORK
REIGHTON DRIVE J/W REIGHTON AVENUE	RURAL WEST YORK
RAWCLIFFE LANE O/S LIBRARY	SKELTON RAWCLIFFE & CW
BRANSHOLME DRIVE OPPOSITE 17	SKELTON RAWCLIFFE & CW
SURREY WAY NEAR NO 1	SKELTON RAWCLIFFE & CW
OAKDALE ROAD OUTSIDE LAKESIDE PRIMARY SCHOOL	SKELTON RAWCLIFFE & CW
EASTHOLME DRIVE NEAR RAWCLIFFE INFANTS	SKELTON RAWCLIFFE & CW
OAKDALE ROAD J/W RIVELIN WAY	SKELTON RAWCLIFFE & CW
BRECKSFIELDS ENTRANCE TO SCHOOL	SKELTON RAWCLIFFE & CW
THE VILLAGE ENTRANCE TO SCHOOL (SOTF)	SKELTON RAWCLIFFE & CW
STONE RIGGS S/O 41 (SOTF)	STRENSALL
THE VILLAGE O/S LIBRARY	STRENSALL
SOUTHFIELDS ROAD O/S HEALTH CENTRE	STRENSALL
JCN NEAR MOOR LANE / FLAXTON RD	STRENSALL

LOCATION	WARD
WEST END NEAR ROBERT WILKINSON SCHOOL	STRENSALL
MIDDLECROFT DRIVE NEAR FOOTBRIDGE	STRENSALL
DURSTON DRIVE NEAR FOOTBRIDGE	STRENSALL
CHURCH LANE J/W ST MARYS CLOSE	STRENSALL
BRADLEY DRIVE SIDE OF 25	WESTFIELD
BEECHWOOD GLADE O/S 1	WESTFIELD
FIR HEATH CLOSE O/S 5	WESTFIELD
ASKHAM CROFT J/W WATERMAN COURT	WESTFIELD
FOXWOOD LANE J/W ASKHAM LANE	WESTFIELD
OTTERWOOD LANE NEAR J/W FOXWOOD LANE	WESTFIELD
CORNLANDS ROAD OPP WHITE ROSE PUB	WESTFIELD
DANESFORT AVENUE J/W MIDDLETON ROAD	WESTFIELD
PHEASANT DRIVE OPP NO 14	WESTFIELD
LINET WAY OPP 14/16	WESTFIELD
THANET ROAD O/S EDMUND WILSON SWIMMING BATHS	WESTFIELD
WOODFORD PLACE BETWEEN 4 AND 6	WESTFIELD
KINGSTHORPE OPPOSITE 29/31	WESTFIELD
DIJON AVENUE ENTRANCE TO LOWFIELD SCHOOL	WESTFIELD
ASKHAM GROVE END OF CUL DE SAC	WESTFIELD
TENNENT ROAD BETWEEN 56/61	WESTFIELD
GALE FARM COURT OPPOSITE 23	WESTFIELD
BACHELOR HILL NEAR 12	WESTFIELD
VESPER DRIVE OUTSIDE 22	WESTFIELD
FRONT STREET OUTSIDE VYNER HOUSE	WESTFIELD
FRONT STREET OUTSIDE LIBRARY	WESTFIELD
ASKHAM LANE OUTSIDE 186/188	WESTFIELD
ASKHAM LANE ENTRANCE TO WESTFIELD SCHOOL	WESTFIELD
GRANGE LANE OPPOSITE 60	WESTFIELD
HOWE STREET JCN SEVERUS STREET	WESTFIELD
STUART ROAD NEXT TO ENTRANCE TO BIRCH COPSE	WESTFIELD
CHANCERY COURT AT TOP OF CUL-DE-SAC BEFORE NUMBER 1	WESTFIELD

CYCLE PATH/WAY GRITTING – NORTH

Ref.	Ref.	Location
52	1	James Street Link - Hallfield Road to Hazel Court
49	2	Foss Islands Path - Hallfield Road to Metcalf Lane Osbaldwick
48	3	Foss Islands Path - Crichton Ave to Hallfield Road
6	4	Wigginton Road - Nestle North Freight Access to South Access
46	5	New Earswick to Nestle North Freight Access
45	6	New Lane to Monks Cross Park & Ride site
47	7	Haxby Road / A1237 underpass - western side
43	8	Haxby Road / A1237 underpass - eastern side
44	9	Clifton Moorgate - southern path - Centurion Way to Wigginton Road including path around Bumper Castle
39	10	Clifton Moorgate - southern path - Tribune Way into Water Lane to start of off-road path
37	10a	Clifton Moorgate - southern path - Tribune Way to Centurion Way
38	11	Clifton Moor link road to Wigginton Road roundabout
40	12	Clifton Moorgate - northern path - Tesco roundabout to Kettlestring Lane
32	13	Water End - ramp off carriageway to Salisbury Road (south of road)
14	13a	Clifton Moorgate - northern path - Kettlestring Lane to end of path nr Water Lane
33	14	Clifton Moorgate - southern path - Lakeside School to Oakdale Road East
34	15	Clifton Moorgate - southern path - Oakdale Road East to BMW road
35	16	Clifton Moorgate - southern path - BMW road into Water Lane
36	17	Water Lane between Tribune Way link and Hazelnut Grove
41	18	Clifton Backies between Woodland Chase and Sutton Way
42	19	Water End - Ramp off flood bank to Clifton Green ramp
13	20	Water End - Salisbury Road to end of ramp (north of road)
12	21	Water End - Landing Lane to Salisbury Road crossing (north of road)
11	22	Water End - Salisbury Road to ramp near Poppleton Rd School (south of road)
15	23	Water End - Boroughbridge Road to rail bridge (north of road)
10	24	Boroughbridge Road - shops between Ouseburn Avenue and Shirley Avenue
9	25	Millfield Lane / Low Poppleton Lane to speed table
2	25	Low Poppleton Lane - speed table to Boroughbridge Rd
3	25	Beckfield Lane - Boroughbridge Road to Newlands Drive
4	25	Beckfield Lane - Newlands Drive to Lidgett Grove
5	25	Beckfield Lane - Lidgett Grove to Ouseburn Avenue
6	25	Beckfield Lane - Ouseburn Avenue to Almsford Road
7	25	Beckfield Lane - Almsford Road to Ostman Road
8	26	Millfield Lane - Long Ridge Lane to Villa Court
1	27	Shipton Road / ORR subway northern approach
29	28	Shipton Road / ORR subway southern approach
30	29	Manor Lane to Hurricane Way link path
31	30	Rawcliffe Bar Park & Ride link to Rawcliffe Ings path
17	31	Rawcliffe Ings - Outer Ring Road to start of copse
16	32	Rawcliffe Ings - copse section
18	33	Rawcliffe Ings - Copse to bridge over beck
19	34	Clifton Ings - Beck crossing to Clifton Bridge
20	35	Riverside path - Clifton Bridge to Marygate

1	36	Path from riverside along western edge of Marygate Car Park and through subway
21	37	Minster Yard
4	38	Bridge Lane - Wigginton Road to Footbridge
22	39	Monkgate - shared use path roundabout west of roundabout
27	40	Heworth Green - shared use path from new junction to Monkgate Roundabout
28	41	James Street Link - Morrisons side full length of shared use
54	42	James Street Link - Layerthorpe to Hallfield Road
53	53	Heworth Green - shared use path from new junction to Monkgate Roundabout
50	50	James Street Link - Morrisons side full length of shared use
51	51	James Street Link - Layerthorpe to Hallfield Road
14	14	Fishergate Bar
15	15	Walmgate Bar

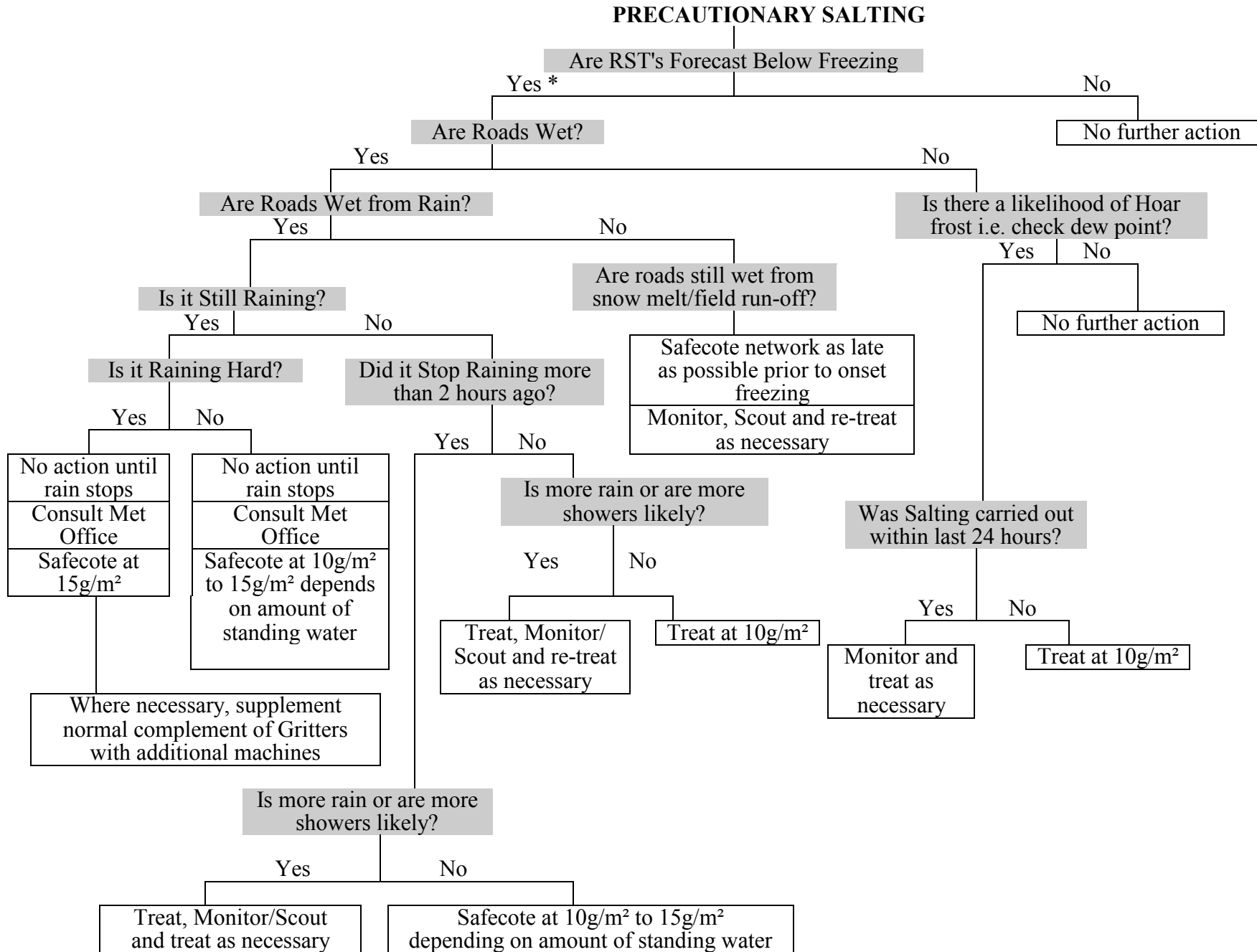
FOR MAP SEE ATTACHED PDF FILE: GRIT09N.pdf

CYCLE PATH/WAY GRITTING – SOUTH

Ref	Ref	Location
93	1	Barbican path - Barbican Road to Fishergate Bar
92	2	Barbican path - Kent Street to Paragon Street
94	3	Retreat Lane
95	4	Walmgate Stray - Barracks to University
91	5	Fulford Road - off road path between Police Station and Hospital Fields Road junction
96	6	Walmgate Stray - path parallel with Heslington Lane
90	7	Fulford Ings - Broadway West link
89	8	New Walk - Blue Bridge to St Oswalds Road
**8 1	**9	Millennium Bridge - curved approach paths on western bank
**8 2	**9	Millennium Bridge - Butcher Terrace to Maple Grove
**8 3	**9	Millennium Bridge - curved ramp towards New Walk
12	10	Barrier - Hospital Fields Road / New Walk junction
13	11	Steps onto New Walk at Sandringham Street, New Walk Terrace, Grange Garth, Hartoft Street, Farndale Street, Alma Terrace, Frances Street, Ambrose Street
88	12	New Walk - Tower Street to Blue Bridge
85	13	Link between Nunnery Lane and Prices Lane
80	14	Terry Avenue - ramp from Bishopthorpe Road to Skeldergate
11	15	Barrier - Terry Avenue / Ramped path junction
79	16	Bishopthorpe Road - opposite former Terrys site
10	17	Barrier - Bishopthorpe Road / Knavesmire junction
78	18	Racecourse - right angled bend to Bishopthorpe Road
9	19	Barrier - Knavesmire / Bustardthorpe Junction
77	20	Racecourse path - Green Lane to bottom of slope where anti-skid starts
8	21	Barrier - Knavesmire / Green Lane junction
76	22	Green Lane - section between two racetracks
75	23	Green Lane - changing rooms to racetrack
74	24	Path around periphery of new York College site and into Sim Balk Lane to changing rooms
70	25	Askham Bar access to Moor Lane
71	25	Moor Lane to Tadcaster Road
72	25	Tadcaster Road to former York College access (north of rdbt)
73	25	Former York College access to Tadcaster Road (south of rdbt)
69	26	Tadcaster Road - ECML bridge to Askham Bar P&R
56	27	Lomond Ginnel - Moor Lane to Lowick
58	28	Ashbourne Way to Bellhouse Way
57	29	Bellwood Drive shared use path
59	30	Bellhouse Way - Bellwood Drive to Acorn Rugby Club field
60	31	Acorn Rugby Club - path along western edge to Foxwood Lane
62	31a	Acorn Rugby Club - path around southern and eastern edge to Kingsway West crossing
61	32	Foxwood Lane to Chesney Fields
63	33	Hob Moor - Kingsway West to ECML Subway
64	34	Hob Moor - Link to Green Lane past Hob Moor School
55	35	Cross Street, Acomb

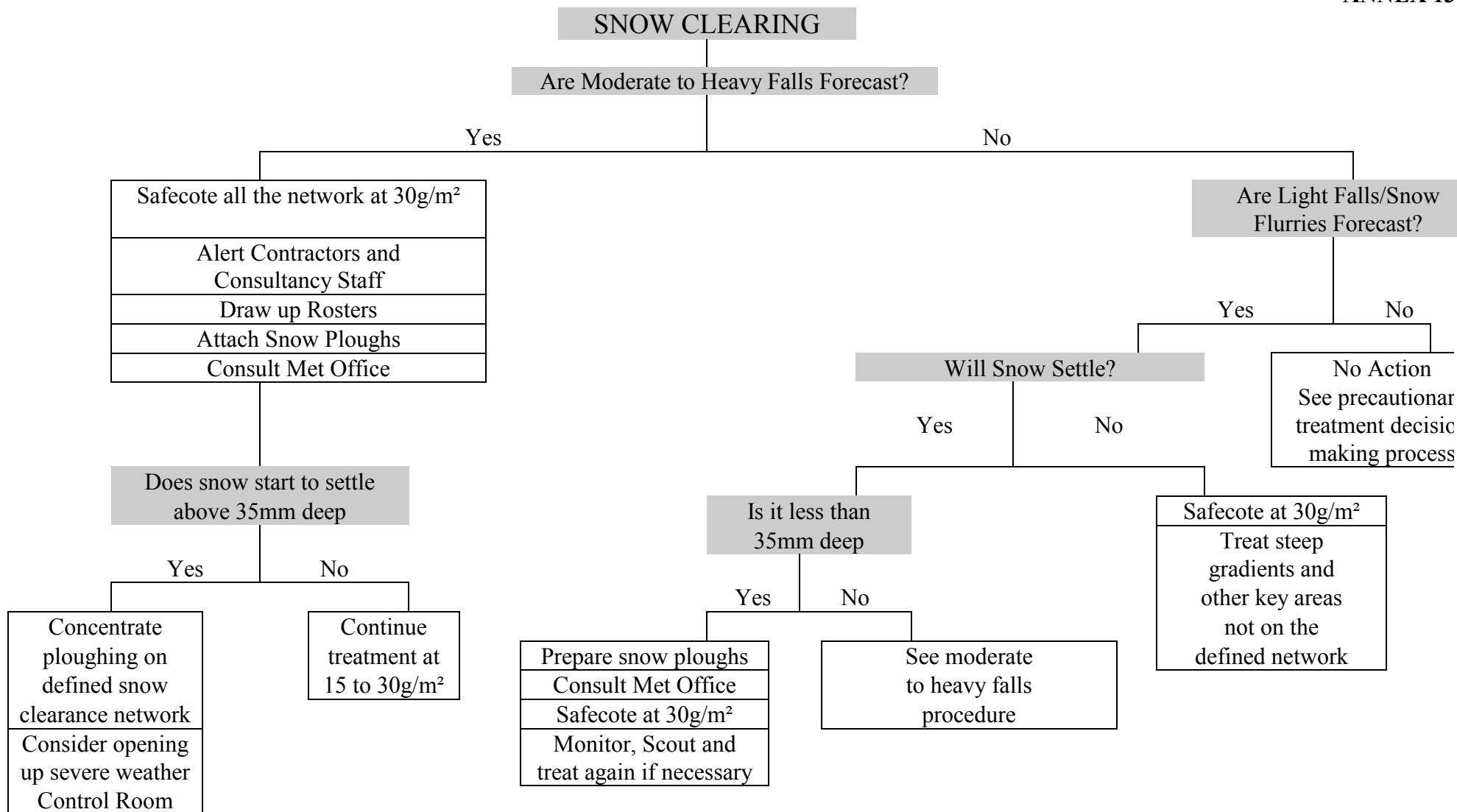
65	36	Hob Moor - Link to Hob Moor Drive
66	37	Little Hob Moor - ECML subway to Tadcaster Road
67	38	Tadcaster Road - Toucan to Knavesmire Road crossing (Knavesmire side of road)
68	39	Little Knavesmire
87	40	Mount Vale - off road path from Albemarle Road to the point where it rejoins road
86	41	The Mount - off road path from Scarcroft Road to Albemarle Road
84	42	Scarcroft Green
26	43	Cinder Lane - NRM to Wilton Rise Footbridge
25	44	Marble Arch shared use subway and approaches at either end
24	45	Post Office Lane
23	46	Riverside path between Lendal Bridge and Jubilee Terrace
5	47	Tanners Moat - gap through to Rougier Street
2	47	Scarborough Bridge - steps on Marygate side

FOR MAP SEE ATTACHED PDF FILE: GRIT09S.pdf



WINTER MAINTENANCE - DECISION MAKING PROCESS - SNOW CLEARING

ANNEX 13





NEIGHBOURHOOD SERVICES

WINTER MAINTENANCE

OPEN ROAD - DEFINITIONS OF TERMS USED IN OPEN ROAD FORECASTS.

ACCRETION	The build-up of snow on objects such as overhead cables, road signs and tree branches. It occurs when wet snow, with temperatures close to freezing, is accompanied by a strong wind. The wet snow freezes on to objects under pressure of the wind. The build up of snow can be quite large, and can cause damage to cables and trees.
AIR FROST	This occurs when air temperatures (measured between 1 and 2 metres above ground) fall below 0°C.
BLACK ICE	Clear ice forms on roads due to the freezing of standing water. Occasionally it may be formed by the transformation of hoar frost, under pressure from car tyres. The name black ice is used, as the road blacktop can be seen through the clear ice. The term is much beloved by the media, but is used less frequently in road weather forecasts.
BLUSTERY	Used to describe showers which are accompanied by strong gusts of wind.
CLIMATIC DOMAIN	An area of a county with broadly similar climatic characteristics, e.g. an urban area, or a high-level area, or a coastal area (see FORECAST SITE).
CONDENSATION	This is the change of state of water vapour to liquid water, thus forming a thin film or mist of water on surfaces such as roads. During the process, heat is released (see DEW POINT).
CONFIDENCE FACTOR	Used by weather forecast organisations to give guidance to highway engineers on the likelihood of forecasts having to be subsequently amended. Confidence HIGH means that amends are unlikely, and confidence LOW that amends are likely. Some use is made of MEDIUM confidence, although usage is discouraged as it can be confusing.
DAMPED	This is the thermal map type that occurs on cloudy, windy nights. Temperature differences along a stretch of road are at a minimum (see THERMAL MAP).
DEPOSITION	This term covers the change of state from water vapour to ice without going through the liquid water stage (see HOAR FROST).
DEW	Liquid water formed on a surface by condensation from the atmosphere.
DEW POINT	The temperature to which a sample of air must be cooled for condensation to take place. Dew point can be measured directly by instrumentation, e.g. road sensors.

DRIFTING	The movement of snow (usually powder snow) under the influence of wind. Snow need not be actually falling for drifting to take place.
DRIZZLE	Small droplets which fall from low cloud. Drizzle can last for several hours and cover a large area, or be intermittent and localised.
DRY ADIABATIC LAPSE RATE	The temperature fall with height within a sample of air before it becomes saturated. The rate of fall is 0.98°C per 100 metres (around 3°C per 1,000 feet).
DRY FROST	The road surface is at 0°C or below, with most roads expected to be dry. However, ice may form due to seepage, burst pipes or in known hollows where moisture persists.
EVAPORATION	The change of state from water to water vapour. The process takes in heat and causes cooling (see LATENT HEAT).
EXTREME	The thermal map type that occurs on calm, clear nights. Temperature differences along a stretch of road tend to be at their maximum (see THERMAL MAP).
FLASH FROST	The rapid build up of hoar frost on roads around sunrise. Roads can change from dry to a significant cover of hoar frost within 15 minutes (see HOAR FROST).
FOG	The suspension of water droplets in air at or close to the ground.
FORECAST SITE	A road sensor site for which a graphical forecast is provided. It is usual to have one forecast site per climatic domain (see CLIMATIC DOMAIN).
FREEZING FOG	Fog which forms when air temperatures are below freezing. The fog droplets remain in the liquid state, but will freeze on contact with trees and other objects, and under some circumstances the road surface (see RIME).
FREEZING POINT	The temperature at which pure water will change to ice (although strictly it is the temperature at which ice melts), in practice, 0.0°C.
FREEZING RAIN / DRIZZLE	A very dangerous condition where raindrops (from warmer air aloft) fall on to surfaces below freezing, thus freezing instantly and causing widespread ice. Fortunately, rare in the UK. Most likely to occur at the end of a prolonged spell of cold weather.
FREQUENT	Used in conjunction with showers. The term frequent showers implies that nearly all areas will catch a shower, and many places will see more than one shower (see ISOLATED and SCATTERED).
FROST	A generic term to cover temperatures below freezing. Where these temperatures occur describes the type of frost (air frost, ground frost, road frost, etc.). The rather loose term of 'frost' is rarely used in road weather forecasts without qualifying it. Note that the word frost does not supply deposition on a road surface. The deposition of ice crystals on to a road surface is known specifically as hoar frost (see HOAR FROST).
GALE	Mean wind speed of 39 m.p.h. or more, or with gusts to 49 m.p.h. or more. A severe gale has a mean wind of 45 m.p.h. or more, or has gusts to 70 m.p.h. or more.

GROUND FROST	This term is used on occasions when temperatures on the ground (as opposed to in the air) fall below freezing. The official meteorological definition uses the temperature over short mown grass. The term has little relevance to winter maintenance, which is concerned specifically with road temperatures. The term 'ground frost' heard on media forecasts (TV, radio) does not guarantee that there will also be a road frost.
HAIL	Precipitation in the form of balls or pieces of ice. Usually occurs in showers.
HOAR FROST	Deposition of water vapour directly as ice on to ground surfaces. The ice forms as white crystals and is usually highly visible. Hoar frost is more common over grass than on roads. Hoar frost on roads may quickly change to clear ice under pressure from car tyres.
ICE	A generic term for frozen water. In winter maintenance terms usually refers to clear ice on road surfaces (see BLACK ICE).
ICY PATCHES	Used in road weather forecasts to indicate ice formation in prone areas only (gutters, dips in the road surface, etc.).
ICY STRETCHES	Used in road weather forecasts to indicate more-widespread ice.
ISOLATED	Used in conjunction with showers. Isolated showers implies that most places will stay dry, but somewhere within the area of coverage a shower may occur (see FREQUENT and SCATTERED)
INTERMEDIATE	The thermal map type that occurs on nights where cloud cover, wind speed (or both) is variable. Road temperature differences tend to lie between the Damped and Extreme values (see THERMAL MAP).
INTERVAL	Used to describe cloud breaks or amounts of sunshine, generally of less than one hours duration.
LATENT HEAT	The quantity of heat absorbed or emitted, without change of temperature, during a change of state of unit mass of a material.
MARGINAL	This describes nights where the road temperature is expected to be very close to freezing (normally within 1°C).
PERIOD	Used to describe the length of cloud breaks or amounts of sunshine, generally of two hours or more duration.
POWDER SNOW	The form of snow that occurs when air temperatures are well below freezing (-2°C or less). This form of snow is very fine (like sugar crystals), drifts very easily, but does not tend to stick to objects (no accretion). It can be handled by snow blowers. Salt is usually less effective.
PRECIPITATION	A general term which covers all water (or ice) which 'falls' from the skies. As well as rain, sleet, snow and hail it also includes dew, hoar frost and fog.
PRECIPITATION TYPE	The individual type of precipitation. In winter maintenance activities this will be one of rain, drizzle, sleet, wet snow, hail, freezing rain and freezing drizzle (see PRECIPITATION).
PROLONGED	Used to describe showers which merge together producing a spell of continuous precipitation, generally lasting more than one hour and covering a relatively large area.

RAIN	Water droplets ... from clouds. Rain takes many forms, and can be of many different intensities and durations. Within road weather forecasts there will often be differentiation between rain and showers, the former usually referring to longer-lived but light intensity precipitation, and the latter to short duration but heavy intensity.
RELATIVE HUMIDITY	This is the amount of actual water vapour held in a sample of air at a given temperature, divided by the maximum amount of water that could be held in that sample of air at that temperature, expressed as a percentage. Within fog or heavy rain, humidities may reach 100%. On a sunny, warm afternoon in summer, humidities may fall to 30%. On an average night in winter, humidities rarely fall below 80% (which is the minimum humidity at which salt crystals will start to absorb water).
RIME	Deposition of ice from freezing fog. It is a white form of ice, similar to hoar frost, but has a finer (at times feathery) structure. On roads, tends to be more of a problem at higher levels than lower levels.
RST	Common abbreviation for road surface temperature.
SATURATED	Air is said to be saturated when, at a given temperature, it holds the maximum amount of water vapour possible. Any cooling below its current temperature will result in condensation. The relative humidity of saturated air is 100%.
SATURATED ADIABATIC LAPSE RATE	The rate at which air temperature falls with height within saturated air, e.g. within fog or cloud. It is less than the dry adiabatic lapse rate, 0.49°C per 100 metres or around 1.5°C per 1,000 feet.
SCATTERED	Used in conjunction with showers. Scattered showers imply that a wide covering of showers across an area is expected. Most places will see a shower but one or two locations may stay dry (see FREQUENT and ISOLATED).
SEEPAGE	Leakage of ground water from roadside verges. Can cause roads to become wet, when otherwise they would have stayed dry, possibly leading to ice formation later.
SHOWER	A short spell of precipitation, generally less than an hour, and covering a relatively small area. It can be assumed that a shower will be of rain unless qualified by the words snow, hail or wintry.
SLEET	Partially melted snow. If precipitation becomes heavy, sleet may readily turn to snow.
SNOW	A form of precipitation where tiny ice crystals bond together into flakes. Snow can be either of the Wet or Powder forms.
SPELL	Used to describe the length of cloud breaks or amounts of sunshine, generally between one and two hours duration.
THERMAL FINGERPRINT	The temperature trace along a road surface (usually recorded by an infrared thermometer during a thermal mapping run). Regardless of the mean temperature of the trace, it shows the thermal characteristics of the road surface (warm and cold spots).
THERMAL MAP	The representation of relative variations in road surface minimum temperature for each of the three weather categories, presented in colour bands (usually of 1°C).

THERMAL MAP TYPE	Defined as damped, intermediate or extreme (see previous entries). When using thermal maps in the forecast mode, the weather forecast organisations will send the thermal map type with the ice prediction graph.
TREND	The likely direction in which the weather is moving over the next two to five days, e.g. 'turning much colder with night frosts' or 'remaining mild and windy'.
WASH OFF	This occurs when rain is sufficiently heavy to remove salt solution from the road surface.
WATER VAPOUR	Water in its gaseous state.
WET SNOW	Snow which falls with air temperatures close to freezing point. It melts easily and can be very sticky (see ACCRETION). It is more common in the UK than the other variant of powder snow.
WIDESPREAD	Used to describe showers. Implies that nearly all areas will see a shower and some areas may see more than one (see FREQUENT).
WINTRY	This term covers precipitation which contains ice in one of its many variants (sleet, wet snow, hail). The term is used extensively in media forecasts (e.g. 'wintry showers are expected, showers will turn wintry over hills'). However, the term is ambiguous in road weather terms and hence any precipitation containing ice will be described more fully, with likely effects on the road.

ANNEX 15

WEATHER STATION LOCATION MAP

SEE ATTACHED PDF: Weather Stations 09.pdf

CIRCULATION LIST :

- Michael Watkins, Acting Engineer, Highway Maintenance Services, EcoDepot, Hazel Court.
- Highway Maintenance Support Team, EcoDepot, Hazel Court.
- Andy Binner, Head of Highway Maintenance Services, EcoDepot, Hazel Court.
- Kersten England, Chief Executive, The Guildhall, St Helen's Square.
- Andrew Waller, Leader of the Council, The Guildhall, St. Helen's Square.
- David Scott, Leader of the Labour Group, The Guildhall, St Helen's Square.
- Ian Gillies, Leader of the Conservative Group, The Guildhall, St Helen's Square.
- Andy D'Agorne, Leader of the Green Party, The Guildhall, St Helen's Square.
- Ken King, Shadow Executive Member for Neighbourhood Services, The Guildhall, St Helen's Square.
- Sally Burns, Director of Neighbourhood Services, EcoDepot, Hazel Court.
- Richard White, Assistant Director (Neighbourhood Services), EcoDepot, Hazel Court.
- Damon Copperthwaite, Assistant Director (City Development and Transport), 9 St Leonard's Place.
- Jim Breen, Emergency Planning Centre, The Guildhall, St Helen's Square.
- Ann Reid, Executive Member for Neighbourhood Services, The Guildhall, St Helen's Sq.
- Reception Staff, Directorate of City Strategy, 9 St Leonard's Place.
- Ashley Mathieson, Facilities Manager, EcoDepot, Hazel Court.
- Russell Armitage, Networks Manager, 4 Museum Street.
- Martin Horner, Civil Engineering Manager, Neighbourhood Services, EcoDepot, Hazel Court.
- Bill Manby, Civil Engineering Supervisor, Neighbourhood Services, EcoDepot, Hazel Court.
- Sean Ensor, Civil Engineering Supervisor, Neighbourhood Services, EcoDepot, Hazel Court.
- Nick Massingham, Civil Engineering Supervisor, Neighbourhood Services, EcoDepot, Hazel Court.
- Steve Burrell, Traffic Control Room, North Yorkshire Police, Fulford Road.
- Matt Beer, Head of Marketing and Communications, The Guildhall, St Helen's Square.
- City Centre Office, Silver Street.
- Russ Broadbent, Parking Services Manager, 9 St Leonard's Place.
- Terry Walker, Public Transport Officer, 9 St Leonard's Place.
- Kevin Hall, Assistant Director Learning Culture & Children's Services (Resource Management), George Hudson Street.
- Val Sutton, Group Manager Community Services, St Anthony's House, Brook Street, York
- Heather Barden, Service Manager Community Services, George Hudson Street
- Dave Carter, Head of Network Management, 9 St. Leonard's Place.
- Winter Maintenance File
- Zoe Burns, Head of Neighbourhood Management, De Grey House
- Dave Batchelor, Civil Engineering Supervisor, Neighbourhood Services, EcoDepot, Hazel Court.
- Members Library, The Guildhall, St Helen's Square.
- John Ross, Engineering Technician, Highway Maintenance Services, EcoDepot, Hazel Court.

TOTAL NUMBER OF COPIES = 35

Community Safety O & S Committee - Possible Scrutiny Topics

- Police Response Times
- Council's policy re dangerous dogs
- Increase in rat population resulting from the change in the refuse collection cycle
- Correlation between the lack of youth facilities and the increase in anti-social behaviour
- Correlation between poor housing and anti-social behaviour
- City centre cleansing
- Teenagers buying alcohol
- Provision and standard of Public Toilets
- The public's perception of crime in York – York actually one of the safest cities to live in but the public perceives it to be a dangerous place. How can we address this?

This page is intentionally left blank

**Community Safety
25/11/09**

HORIZON SCANNING

1. Policing White Paper

A new Policing White Paper will be released in December. This follows on from the Louise Casey & Sir Ronnie Flanagan Reviews around the link between Neighbourhood Management & Neighbourhood Policing. This will include looking at how local authority strategies are aligned to policing priorities.

2. Confidence Agenda

Meeting the Policing Pledge and improving confidence levels will be under the spotlight in the next 12 months. This means SYP will need to increase work to target the media through proactive reporting and using other social marketing techniques to promote the work being done in York.

3. Anti-Social Behaviour

There is currently a big focus on anti-social behaviour with the announcement of funding for some cities (York included) and interest from the Home Office on how partnerships deal with ASB. Recent queries have included information on how CDRPs deal with breaches.

4. Violence against women and girls

This is a growing agenda with the announcement of an education package for age 5+ in two years time around violence toward women and girls and domestic abuse. Within this, is also the issue of honour killings (there are two investigations in North Yorks) and how that sits within our DV strategy.

5. Problem Solving

The Home Office/ACPO are currently looking at the issue of problem solving and use of the National Intelligence Model and will be developing work around how partnerships engage in this process. This will include the roll out of further guidance through Government Offices.

6. Working with the Third Sector & use of volunteers

Again this is a growing area of interest given that the majority of community safety "customers" will have had some contact with a voluntary organisation. Also there is drive within the Policing White Paper to increase the use of volunteers including neighbourhood watch.

7. Improvements to the working arrangements of the DAT/CDRP

Following the North Yorkshire review, the review of service provision and the DAT needs assessment, this item is still high on the local (sub-regional) agenda in terms of how York takes forward its plans, splits from county and improves performance

8. **Alcohol Agenda**

Tackling alcohol related violence linked to the night time economy remains a national, regional and local priority. This includes the levels of alcohol treatment provision and how this is affected by the voluntary status of many service providers within the current economic climate.

ISSUES REQUIRING CONSIDERATION/FURTHER WORK

1. **Capacity**

There will be areas of the Policing White Paper which will impact on Community Safety Partnerships and the way in which they work. The focus on ASB and the work required around the confidence agenda will all result in increased workloads. Similarly the increased workload under DV through focusing more broadly on violence against women and girls will carry an increase workload. SYP currently has 10 members of staff. Most of this team are specialists performing a very specific role. There is very little resilience and no scope for expansion given that budgets have remained largely static for 10 years.

Are we making best use of volunteers? Is there scope to improve existing structures eg. Neighbourhood Watch? Could we increase capacity into the SYP team through using volunteers?

2. **Contribution of partners**

Currently, the only partners contributing to SYP in either funding or staff are North Yorkshire Police, City of York Council and the North Yorkshire Police Authority. Is there scope to look at the contribution made to community safety by each of the partners and whether or not capacity could be increased by broadening the extent of partner contributions?

3. **Alcohol funding/data**

There is no national funding stream available to tackle alcohol related crime and disorder other than through ABG. Is the service provision in York sufficient, what is required to increase capacity within the support services and is there scope for other partners eg. PCT to assist? Also, data from A&E is still unavailable. Is there scope to improve data capture methods and ensure that data is available to the analyst to provide a more complete picture of the extent of the problem?

Community Safety Overview & Scrutiny Committee Work Plan 2009-10

Meeting Date	Work Programme
7 July 2009	<ol style="list-style-type: none"> 1. Report on Overview & Scrutiny Committees - Terms of Reference 2. Guidance on Scrutinising Crime & Disorder Issues 3. 2008/09 Year End Outturn Report 4. Corporate Strategy – Key Performance Indicators & Actions for 2009/10 – Understanding the corporate priorities relevant to the Committee’s ‘terms of reference’ in order to establish a baseline for making proposals for changes to the Corporate Priorities in 2010/11
22 September 2009	<ol style="list-style-type: none"> 1. First Quarter Monitoring Report 2. Update Report presenting correct performance indicators relevant to this Committee
1 December 2009	<ol style="list-style-type: none"> 1. Report on Re-structure of Police Force in York 2. Second Quarter Monitoring Report 3. Feasibility Report on Review of the Council’s Alleygating Policy 4. Attendance of the Executive Leader (& Executive Member for Neighbourhood Services)
19 January 2010	<ol style="list-style-type: none"> 1. Presentation by North Yorkshire Fire & Rescue Service 2. Report on Possible Topics for Scrutiny Review 3. Consideration of Workplan
2 March 2010	<ol style="list-style-type: none"> 1. Third Quarter Monitoring Report 2. Scoping Report (s) for topics agreed for Scrutiny Review 3. Consideration of Workplan & Extract from Executive Forward Plan
29 June 2010	
Sept 2010	
Dec 2010	

This page is intentionally left blank

FORWARD PLAN ITEM

Meeting: Executive Member for Neighbourhood Services

Meeting Date: 19/01/10

Keyword: Service Monitoring; Budget; Economics and finance;

Item Type: Executive Member Decision - of 'Normal' importance

Title of Report: Neighbourhood Services Fees and Charges for 2010/11

Description: Purpose of report: To inform the Executive member of the changes to the fees and charges for services within Neighbourhood Services for 2010/11.

Members are asked to: Approve the fees and charges for 2010/11

Wards Affected: All Wards;

Report Writer: Rachel Harrison

Deadline for Report: 05/01/10

Lead Member: Councillor Ann Reid

Lead Director: Director of Neighbourhood Services

Contact Details: Rachel Harrison, Management Accountant

rachel.harrison@york.gov.uk

Implications

Level of Risk: 01-03 Acceptable

Reason Key:

Making Representations: N/A

Process: N/A

Consultees: N/A

Background Documents: Committee Report for Neighbourhood Services Fees and Charges for 2010/11

Call-In

If this item is called-in either pre or post decision, it will be considered by Scrutiny Management Committee on: 07/12/09

Internal Clearance Process**Pre-Decision**

By Chief Officers at

on:

By Political Group Leaders on:

By Strategic Policy Panel (if required) on:

Post-Decision

By Strategic Policy Panel (if Required) on:

FORWARD PLAN ITEM**Meeting:** Executive Member for Neighbourhood Services**Meeting Date:** 16/02/10**Keyword:** Environment; Budget; Be significant in terms of its effects on communities;**Item Type:** Executive Member Decision - of 'Normal' importance**Title of Report:** Expansion of Kerbside Boxes**Description:** Purpose of report: Information only.

Members are asked to: Note the report.

Wards Affected: All Wards;**Report Writer:** Geoff Derham **Deadline for Report:** 02/02/10**Lead Member:** Councillor Ann Reid**Lead Director:** Director of Neighbourhood Services**Contact Details:** Geoff Derham

geoff.derham@york.gov.uk

Implications: Equalities**Level of Risk:** 01-03 Acceptable**Reason Key:** It is significant in terms of its effect on communities**Making Representations:****Process:****Consultees:****Background Documents:** Committee Report for Expansion of Kerbside Boxes**Call-In**

If this item is called-in either pre or post decision, it will be considered by Scrutiny Management Committee on: 21/12/09

Internal Clearance Process**Pre-Decision**

By Chief Officers at

on:

By Political Group Leaders on:

By Strategic Policy Panel (if required) on:

Post-Decision

By Strategic Policy Panel (if Required) on: